



<https://sas.illuminate.com/site/external/jwsdetect/playback.jnlp?psid=2011-03-01.1545.M.701F07B97850429C0D5915C91801E2.vcr&sid=559> (link to recorded meeting)

Board of Trustees Meeting

March 1, 2011

- I. Preliminary
 - A. Call to Order: The meeting was called to order at 6:33 pm
 - B. Roll Call: Travis Gery, Bonita Harman, , Mary Steffey and Lawrence Frangiosa new attorney for the Board
- II. Old Business
 - A. Approve Previous Meeting Minutes
Bonita made a motion to approve the minutes from Jan as Feb had been cancelled due to weather
second Travis Gery
unanimously approved
- III. New Business: Report to the Board (see board report)
 - A. Enrollment: Tim Kreider gave the enrollment report. Enrollment 6746 which is highest in Agora history. Still enrolling for k-8th. High school enrollment is now closed for this year. March we will open enrollment for next year
Retention is good compared to this time last year...rate is 80%....last year 75% at the same time. This may be attributed to face to face enrollment and home visits.
Attendance 3% gain to 92% from last year.
 - B. Personnel Report by Sharon Williams gave the report: 11 new hire since Jan for a total of 407 employees. teacher-287, Advisors /Guidance 25, Support Staff 94
Mary Steffey made a motion to approve the personnel report
second by Bonita Harmon
Unanimously approved
 - C. Finance: Mary Markert gave the report(see board report)
forecasted surplus of \$1.6M surplus versus the budgeted surplus of \$1.3M.
k12 material lease credit of \$207K to correct Dec and Jan charges. Forcast was updated to include increased enrollment and updates in grant revnue for the year to include decreases in IDEA of \$108k for the consortium cost offset by the increases in Title I funds of \$119k
Mary Steffey made a motion to approve the finance report
seconded by Bonita Harmon
unanimously approved
 - D. Audit update FY 06/07 is going through final revisions and
FY 07/08 audit is underway
 - E. Academic (see board report)
Sharon Williams gave the report (see board report) on the new average growth index by the PDE. This show that students we are in line with all the other cyber

charters and this says more than a one day test.

Jane Swan gave the high school report which shows significant gains from last year at this time, passing rate have increased 31.1 %% growth in the 3.0-4.0. Average gpa growth of 39%. We are making significant gains with across the population.

Amy Rupp gave the Middle School Report which show a growth of 2.0-4.0 range for the 2010-2011 school year with an 8% growth in the 3.0-4.0 range. There was a 7% decrease in students earning a GPA of less than 1.0. There is a trend that the longer a student is enrolled with us the better their passing rate.

April Nix gave the elementary report. AIMS web testing report has show growth in the number of students achieving benchmark status. Passing rate is 86%

Judy Deemer gave the Special Education. There is a 17% increase in the passing rate which is 58% of the Special Ed students. Increased participation in Compass Odyssey and already gains are being seen by many students. File audit was conducted in January by K-12 and was very productive.

- F. Community and Parent Updates report by Laura Zottola: Community Service is going to be Marching for Babies . There will be 15 walks across the state to raise money for the March of Dimes. Box tops fitness events were held across the state and Define U was held in eight locations. Five or 6 more are planned for May. Read Across America will be in April and end of year events will be planned. Agora Booster club will meet twice a month and we will be opening parent led elluminates and will be running parent to parent to parents and staffing events and new family welcome.

- Proms will be in Phila, Harrisburg and we are trying to find location for Pittsburgh.

- Graduation is 6/16 at the West Shore in Harrisburg area.

- Yearbook for all school will be this year for the first time for k-8 and high school.

- G. Charter Renewal Status/PDE Updates Sharon Williams said we are down to the last leg and an alignment is due the last one is due in March 31. All other alignments have been submitted including responses required by the renewal re: teacher evaluation, formative assessment, description of Agora Remediation program and ADO and explanation of ACT 48 teacher uploads.

- Kudos received from World Language Director at PDE.

- H. Policy Recommendations (Action) Laptop Damage policy was tabled.

- School Calendar survey was done and 67% of the teachers wanted an after Labor Day first day of school. 55% of the parents want to start before Labor Day (1049 replied or 16% of the families)

- Mary Steffey made a motion to approve the motion to have the start date be after Labor Day.

seconded by Bonnie Harmon

unanimously approved

Discussion of teacher policy manual and financial policies development.

Change of Board to the 4th Tuesday of the month beginning in May 2011

and the May meeting will also be held at the Learning Center at 3300 Henry

Ave, Phila Pa. The April meeting will be held as planned on April 5,2011

I Public Comment (20 minutes)

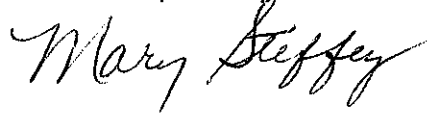
J. Executive Session

K. returned to open session 8:41 pm

L. Adjournment : Mary Steffey made a motion to adjourn at 8:41pm

Bonnie Harmon seconded

minutes respectfully submitted by Mary Steffey

A handwritten signature in cursive script that reads "Mary Steffey". The signature is written in black ink and is positioned below the typed name.

Board Report

March 1, 2011



AGORA
CYBER CHARTER SCHOOLSM

Respectfully Submitted by:
Sharon Williams
4/6/2011



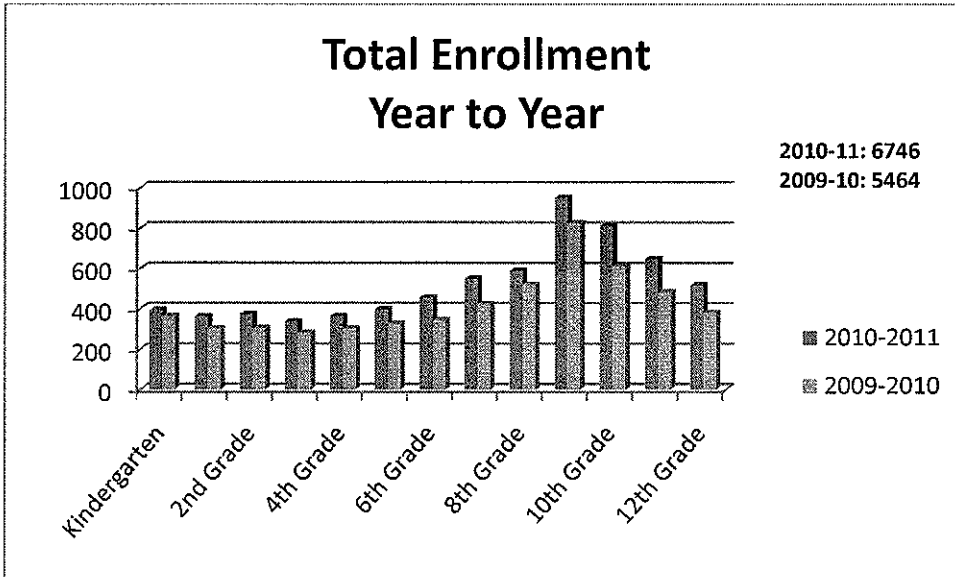
Contents

| | |
|--|----|
| Enrollment | 3 |
| Yearly Comparison..... | 3 |
| Monthly Comparison..... | 4 |
| Retention Rates | 4 |
| Attendance | 6 |
| Personnel..... | 7 |
| Finance | 7 |
| Academics..... | 8 |
| High School Summary..... | 8 |
| Middle School Summary..... | 8 |
| Elementary School Summary..... | 9 |
| Special Education Updates | 9 |
| Clubs and Activities/ Community Outreach | 10 |
| Upcoming Events..... | 10 |
| Policy Consideration..... | 10 |
| Renewal Tasks | 10 |
| Appendix 1: Enrollment Details..... | 11 |
| Appendix 2: Retention Details..... | 12 |
| Appendix 3..... | 13 |

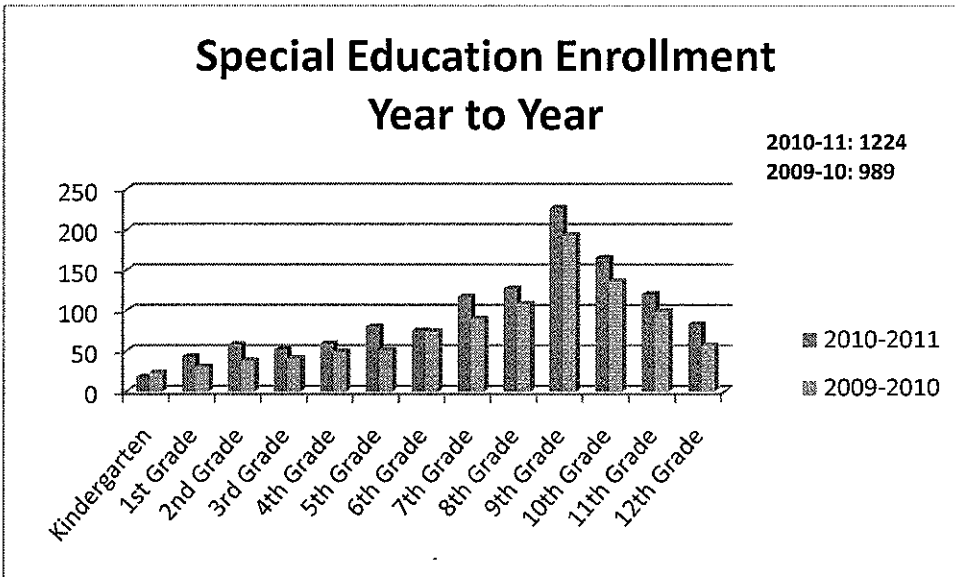
Enrollment

Enrollment is currently at the highest point it has been in Agora's history. Enrollment peaked with the recent 2 cohorts starting the second semester in High School. High School Enrollment is now closed for 10-11. K-8 is still enrolling for a final 10-11 start date of March 7th. Enrollment of new students for 11-12 as well as re-registration for current students will begin March 14th.

Yearly Comparison

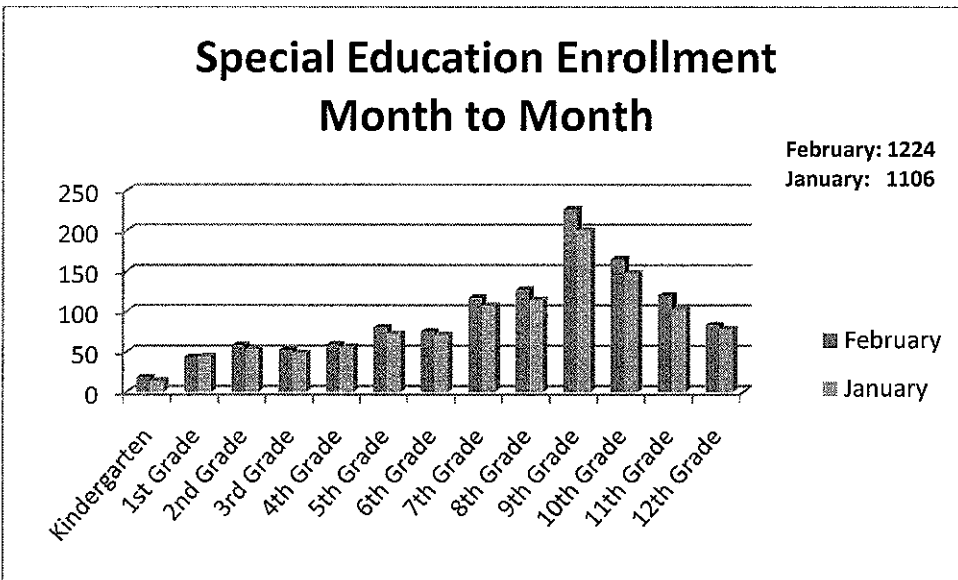
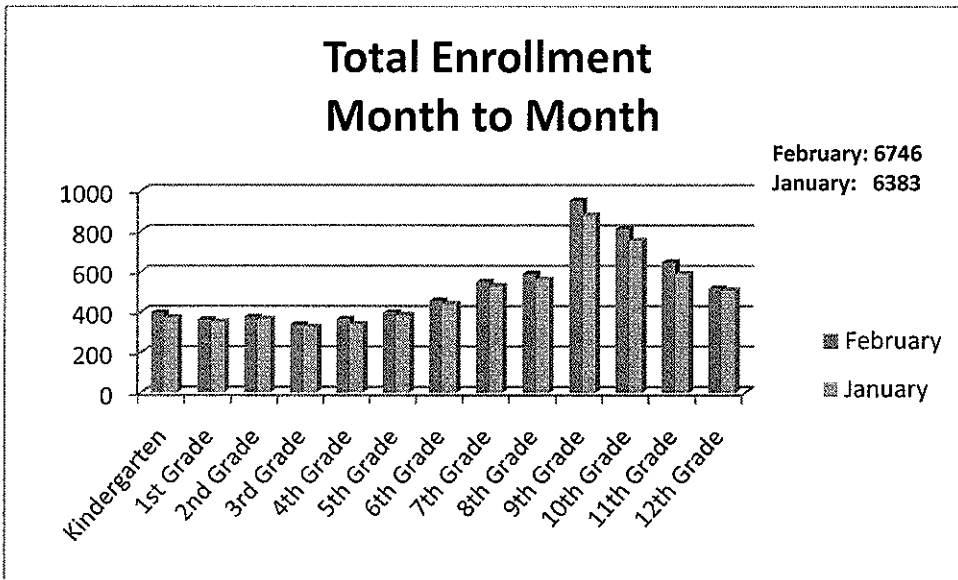


| Percent Change Year to Year | | |
|--------------------------------|------------|-------|
| General Ed | Special Ed | Total |
| 23.4% | 23.8% | 23.5% |



| Percent Change Month to Month | | |
|----------------------------------|------------|-------|
| General Ed | Special Ed | Total |
| 4.6% | 10.7% | 5.7% |

Monthly Comparison



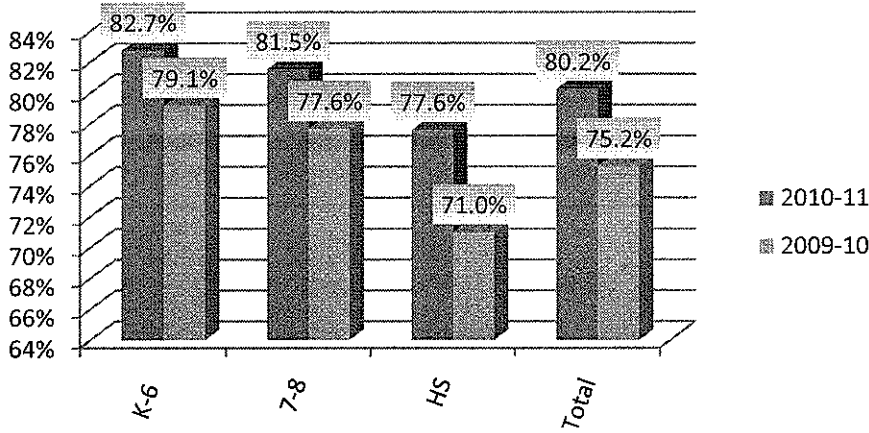
Retention Rates

Retention rates continue to show solid improvement over last year at this time, with a 5% increase across all grades. The February rated dropped from the January rate by about the same amount as the December to January drop. This is to be expected as we move through the year.

Respectfully Submitted by:
 Sharon Williams
 4/6/2011

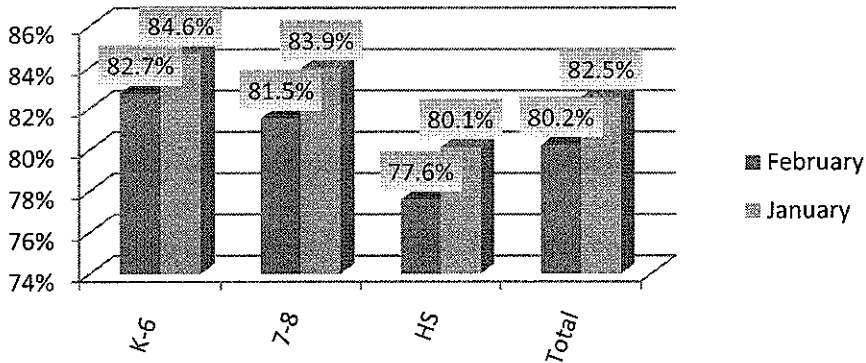


Retention Rates Year to Year



| | Percent Change Year to Year |
|-------|--------------------------------|
| K-6 | 3.6% |
| 7-8 | 3.9% |
| HS | 6.6% |
| Total | 5.0% |

Retention Rates Month to Month



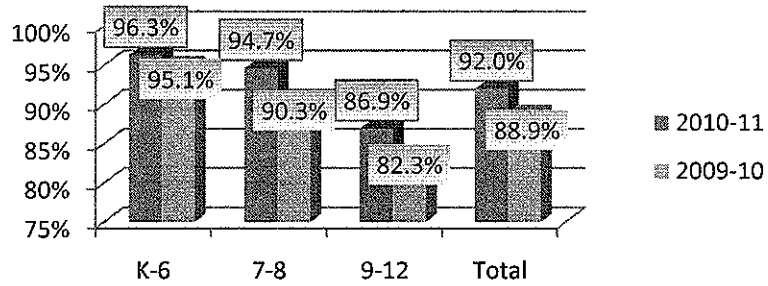
| | Percent Change Month to Month |
|-------|----------------------------------|
| K-6 | -1.9% |
| 7-8 | -2.4% |
| HS | -2.5% |
| Total | -2.3% |

Attendance

Attendance Rates

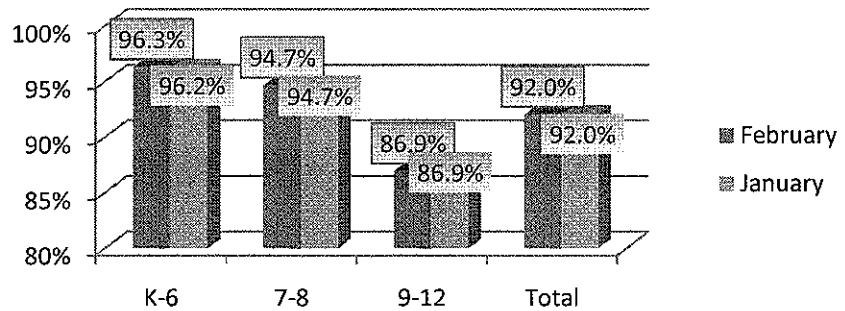
Attendance continues to show improvement over last year with a 3.1% increase in attendance rate across all grades and the most dramatic improvements coming in Middle School and High School. The rates stayed the same across all grade levels since last month.

Attendance Rates Year to Year



| Percent Change Year to Year | |
|-----------------------------|------|
| K-6 | 1.2% |
| 7-8 | 4.4% |
| 9-12 | 4.6% |
| Total | 3.1% |

Attendance Rates Month to Month



| Percent Change Month to Month | |
|-------------------------------|------|
| K-6 | 0.1% |
| 7-8 | 0.0% |
| 9-12 | 0.0% |
| Total | 0.0% |

Respectfully Submitted by:
 Sharon Williams
 4/6/2011



Personnel

The following changes to staff occurred since the last board meeting: (Personnel Report Attached)

Hired - 11:

- Elementary Special Education Teacher
- Middle School Special Education Teacher-LTS
- High School English Teacher
- High School Math Teacher
- High School Social Studies Teacher
- High School Special Education Teacher (2)
- High School Business Teacher
- Paraeducator (2)
- Substitute Teacher-Learning Center

| Total Agora Employees | |
|-----------------------|-----|
| February 2011 | 407 |

| Employee Type | |
|-------------------|-----|
| Teachers | 287 |
| Advisors/Guidance | 25 |
| Support Staff | 94 |

| Teacher Breakdown | |
|-------------------|-----|
| Elementary | 79 |
| Middle School | 43 |
| High School | 107 |
| Special Education | 58 |

Finance

| Item | Amount (Current Actuals) |
|--------------------------|--------------------------|
| Revenue | 38.9M |
| Expenditures | 37.7M |
| Net Fund Balance/Deficit | 1.2 M |

Financial Updates: Updated financials include comparison of full year forecast to Budget showing a forecasted \$1.6M surplus versus the budgeted surplus of \$1.3M.

Highlights for the month include K12 materials lease credit of \$207k to correct December and January charges.

Forecast was updated to include increased enrollment from higher than expected Jan approvals and updates in grant revenue for the year including decrease in IDEA of \$108k for consortium cost offset by increases in Title funds of \$119k .

Audit Update: FY 06/07 audit report is going through final revisions and should be published shortly.

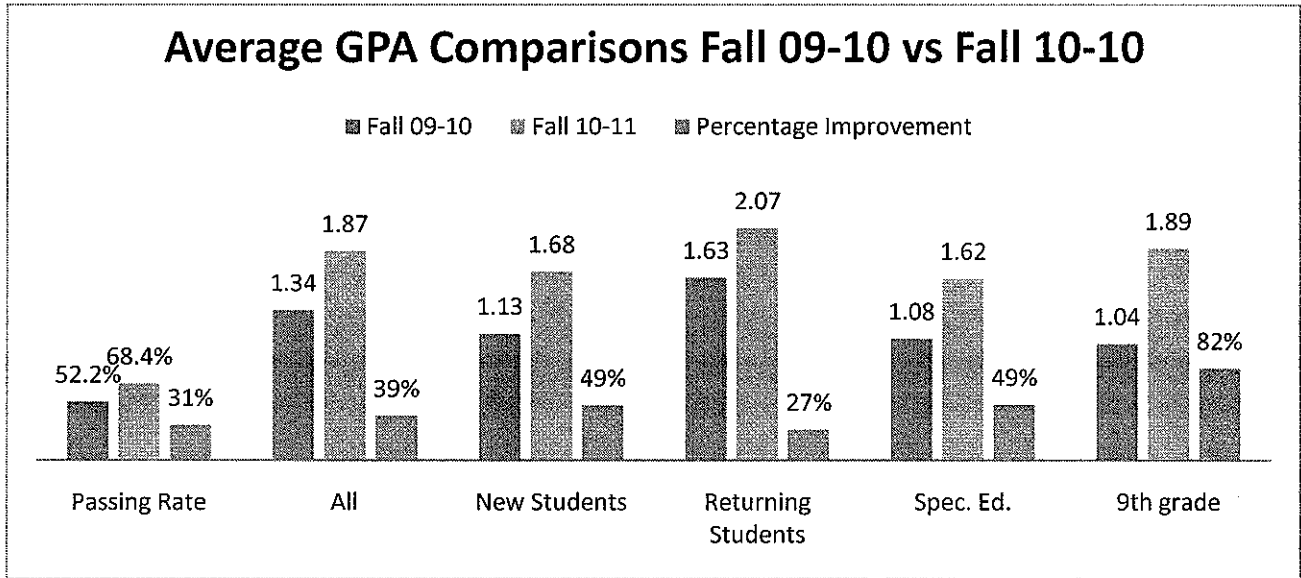
FY 07/08 Audit is underway.

Academics

High School Summary

Performance Comparison of the Fall 2009 and the Fall 2010 Achievement Data

Significant improvement has been seen across the board in all categories analyzed. Passing rates have increased 31.1% and GPA distribution has literally almost reversed itself from most students being in lower GPA categories to higher. Immediately below are bar graphs representing this data and the raw data follows each graph.



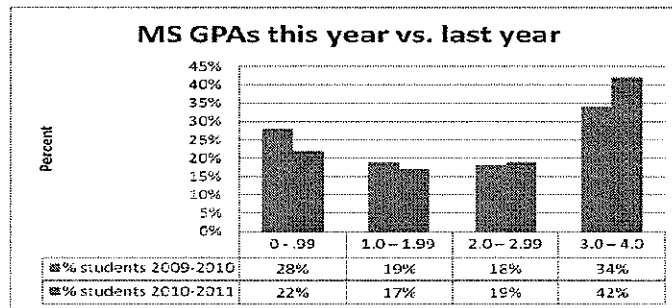
See Appendix 3 for complete report and deeper dive into the data.

Middle School Summary

Achievement Data Comparison from Fall 2009 to Fall 2010

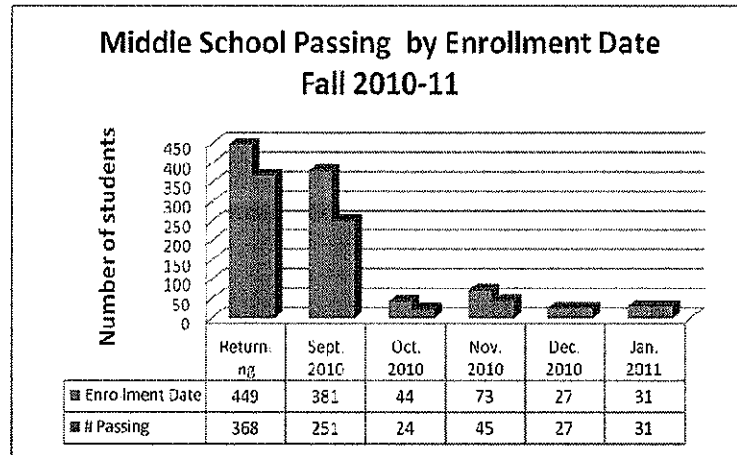
This data illustrates growth in the 2.0 to 4.0 range for the 2010-11 school year with an 8% growth in the 3.0 – 4.0 range.

There was a 7% decrease in students earning a GPA of less than 1.0



Respectfully Submitted by:
 Sharon Williams
 4/6/2011

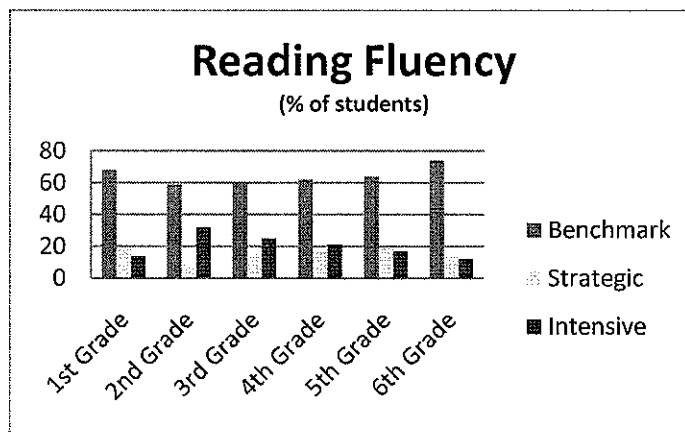
The highest passing rate is with returning students. Students who enrolled in Dec and Jan have not been here long enough for a detailed grade report, therefore they are considered to be passing.



Elementary School Summary

Aims Web Reading Summary Data

The largest numbers of students are performing on the benchmark level (on target) in each grade level for reading fluency. Larger numbers of intensive students sit in 2nd, 3rd, and 4th grades. Specialists and additional remediation sessions are offered for all students.



Special Education Updates

High School Achievement Improvements Since December!

As of 12/17/10 only 41% of Students with special needs were passing.

As of 2/11/11 58% of Students with special needs are passing.

File Audit conducted in late January

“The visit to Agora was very productive and beneficial. The staff demonstrated a keen awareness of the program currently in special education. The department is well organized and there is a seriousness to provide ‘best practice’ for all students with disabilities.”

Respectfully Submitted by:
Sharon Williams
4/6/2011



Clubs and Activities/ Community Outreach

- Teachers are limiting 1 ADO in March and April due to testing
- Family Support Team supporting teachers and region conducting events statewide including Jump Rope for heart, Define U and other outings.

Upcoming Events

- PSSA Testing Window: March 15-April 15, 2010
- Testing all students in grades 3-8 and 11th in Reading, Writing, Math, and Science

Policy Consideration

- Lap top Policy
- School Calendar
 - Parent survey yielded that 55% of parents wanted to start **BEFORE** Labor Day (1049 parents replied)
 - Teacher Survey yielded that 67% of teachers wanted to start **AFTER** Labor Day.
- Teacher Handbook
- Draft Policies including financial

Renewal Tasks

- Final responses and alignments due March 31, 2011 (On target)

Appendix 1: Enrollment Details

| | 2010-2011 | | | 2009-2010 | | | Percent Change | | |
|--------------------|-------------|-------------|-------------|-------------|------------|-------------|----------------|--------------|--------------|
| | General | Special | Total | General | Special | Total | General Ed | Special Ed | Total |
| | Ed | Ed | | Ed | Ed | | | | |
| Kindergarten | 377 | 18 | 395 | 342 | 23 | 365 | 10.2% | -21.7% | 8.2% |
| 1st Grade | 319 | 43 | 362 | 272 | 30 | 302 | 17.3% | 43.3% | 19.9% |
| 2nd Grade | 316 | 58 | 374 | 266 | 38 | 304 | 18.8% | 52.6% | 23.0% |
| 3rd Grade | 285 | 52 | 337 | 239 | 41 | 280 | 19.2% | 26.8% | 20.4% |
| 4th Grade | 305 | 59 | 364 | 253 | 49 | 302 | 20.6% | 20.4% | 20.5% |
| 5th Grade | 317 | 80 | 397 | 276 | 51 | 327 | 14.9% | 56.9% | 21.4% |
| 6th Grade | 380 | 75 | 455 | 270 | 74 | 344 | 40.7% | 1.4% | 32.3% |
| 7th Grade | 432 | 117 | 549 | 333 | 90 | 423 | 29.7% | 30.0% | 29.8% |
| 8th Grade | 462 | 127 | 589 | 410 | 108 | 518 | 12.7% | 17.6% | 13.7% |
| 9th Grade | 723 | 227 | 950 | 631 | 193 | 824 | 14.6% | 17.6% | 15.3% |
| 10th Grade | 646 | 165 | 811 | 476 | 136 | 612 | 35.7% | 21.3% | 32.5% |
| 11th Grade | 526 | 120 | 646 | 384 | 99 | 483 | 37.0% | 21.2% | 33.7% |
| 12th Grade | 434 | 83 | 517 | 323 | 57 | 380 | 34.4% | 45.6% | 36.1% |
| Grand Total | 5522 | 1224 | 6746 | 4475 | 989 | 5464 | 23.4% | 23.8% | 23.5% |

| | February | | | January | | | Percent Change | | |
|--------------------|-------------|-------------|-------------|-------------|-------------|-------------|----------------|--------------|-------------|
| | General | Special | Total | General | Special | Total | General Ed | Special Ed | Total |
| | Ed | Ed | | Ed | Ed | | | | |
| Kindergarten | 377 | 18 | 395 | 359 | 14 | 373 | 5.0% | 28.6% | 5.9% |
| 1st Grade | 319 | 43 | 362 | 305 | 44 | 349 | 4.6% | -2.3% | 3.7% |
| 2nd Grade | 316 | 58 | 374 | 311 | 53 | 364 | 1.6% | 9.4% | 2.7% |
| 3rd Grade | 285 | 52 | 337 | 277 | 48 | 325 | 2.9% | 8.3% | 3.7% |
| 4th Grade | 305 | 59 | 364 | 284 | 56 | 340 | 7.4% | 5.4% | 7.1% |
| 5th Grade | 317 | 80 | 397 | 313 | 72 | 385 | 1.3% | 11.1% | 3.1% |
| 6th Grade | 380 | 75 | 455 | 368 | 71 | 439 | 3.3% | 5.6% | 3.6% |
| 7th Grade | 432 | 117 | 549 | 420 | 107 | 527 | 2.9% | 9.3% | 4.2% |
| 8th Grade | 462 | 127 | 589 | 444 | 114 | 558 | 4.1% | 11.4% | 5.6% |
| 9th Grade | 723 | 227 | 950 | 677 | 200 | 877 | 6.8% | 13.5% | 8.3% |
| 10th Grade | 646 | 165 | 811 | 605 | 147 | 752 | 6.8% | 12.2% | 7.8% |
| 11th Grade | 526 | 120 | 646 | 486 | 102 | 588 | 8.2% | 17.6% | 9.9% |
| 12th Grade | 434 | 83 | 517 | 428 | 78 | 506 | 1.4% | 6.4% | 2.2% |
| Grand Total | 5522 | 1224 | 6746 | 5277 | 1106 | 6383 | 4.6% | 10.7% | 5.7% |

Appendix 2: Retention Details

| | 2010-11 | | | 2009-10 | | | Percent Change |
|--------------|----------------|---------------|--------------|----------------|---------------|--------------|----------------|
| | total enrolled | 2-17 enrolled | 2010-11 | total enrolled | 2-17 enrolled | 2009-10 | |
| Kindergarten | 489 | 395 | 80.8% | 462 | 365 | 79.0% | 1.8% |
| 1st Grade | 436 | 362 | 83.0% | 379 | 302 | 79.7% | 3.3% |
| 2nd Grade | 456 | 374 | 82.0% | 386 | 304 | 78.8% | 3.3% |
| 3rd Grade | 403 | 337 | 83.6% | 363 | 280 | 77.1% | 6.5% |
| 4th Grade | 440 | 364 | 82.7% | 399 | 302 | 75.7% | 7.0% |
| 5th Grade | 490 | 397 | 81.0% | 394 | 327 | 83.0% | -2.0% |
| 6th Grade | 530 | 455 | 85.8% | 427 | 344 | 80.6% | 5.3% |
| 7th Grade | 676 | 549 | 81.2% | 560 | 423 | 75.5% | 5.7% |
| 8th Grade | 720 | 589 | 81.8% | 652 | 518 | 79.4% | 2.4% |
| 9th Grade | 1224 | 950 | 77.6% | 1130 | 824 | 72.9% | 4.7% |
| 10th Grade | 1050 | 811 | 77.2% | 860 | 612 | 71.2% | 6.1% |
| 11th Grade | 830 | 646 | 77.8% | 731 | 483 | 66.1% | 11.8% |
| 12th Grade | 665 | 517 | 77.7% | 519 | 380 | 73.2% | 4.5% |
| K-6 | 3244 | 2684 | 82.7% | 2810 | 2224 | 79.1% | 3.6% |
| 7-8 | 1396 | 1138 | 81.5% | 1212 | 941 | 77.6% | 3.9% |
| HS | 3769 | 2924 | 77.6% | 3240 | 2299 | 71.0% | 6.6% |
| Total | 8409 | 6746 | 80.2% | 7262 | 5464 | 75.2% | 5.0% |

| | February | | | January | | | Percent Change |
|--------------|----------------|---------------|--------------|----------------|---------------|--------------|----------------|
| | total enrolled | 2-17 enrolled | 2010-11 | total enrolled | 1-25 enrolled | January | |
| Kindergarten | 489 | 395 | 80.8% | 450 | 373 | 82.9% | -2.1% |
| 1st Grade | 436 | 362 | 83.0% | 413 | 350 | 84.7% | -1.7% |
| 2nd Grade | 456 | 374 | 82.0% | 429 | 365 | 85.1% | -3.1% |
| 3rd Grade | 403 | 337 | 83.6% | 383 | 325 | 84.9% | -1.2% |
| 4th Grade | 440 | 364 | 82.7% | 410 | 342 | 83.4% | -0.7% |
| 5th Grade | 490 | 397 | 81.0% | 464 | 385 | 83.0% | -2.0% |
| 6th Grade | 530 | 455 | 85.8% | 498 | 439 | 88.2% | -2.3% |
| 7th Grade | 676 | 549 | 81.2% | 631 | 528 | 83.7% | -2.5% |
| 8th Grade | 720 | 589 | 81.8% | 664 | 559 | 84.2% | -2.4% |
| 9th Grade | 1224 | 950 | 77.6% | 1099 | 879 | 80.0% | -2.4% |
| 10th Grade | 1050 | 811 | 77.2% | 954 | 754 | 79.0% | -1.8% |
| 11th Grade | 830 | 646 | 77.8% | 737 | 587 | 79.6% | -1.8% |
| 12th Grade | 665 | 517 | 77.7% | 615 | 508 | 82.6% | -4.9% |
| K-6 | 3244 | 2684 | 82.7% | 3047 | 2579 | 84.6% | -1.9% |
| 7-8 | 1396 | 1138 | 81.5% | 1295 | 1087 | 83.9% | -2.4% |
| HS | 3769 | 2924 | 77.6% | 3405 | 2728 | 80.1% | -2.5% |
| Total | 8409 | 6746 | 80.2% | 7747 | 6394 | 82.5% | -2.3% |

Appendix 3

Performance Comparison Fall 09-10 vs 10-11

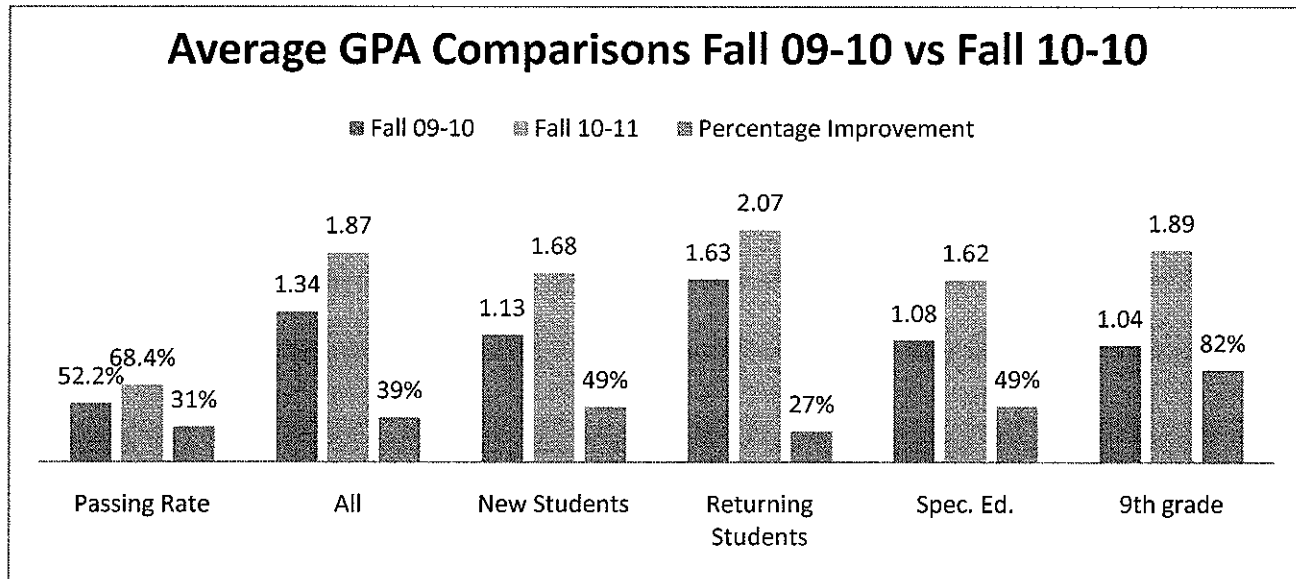
Significant improvement has been seen across the board in all categories analyzed. Passing rates have increased 31.1% and GPA distribution has literally almost reversed itself from most students being in lower GPA categories to higher. Immediately below are bar graphs representing this data and the raw data follows each graph.

Average GPAs

Average GPAs increased improved across the board for all groups analyzed and at a higher rate than passing rate (39% increase in average GPA vs 31% increase in passing rate).

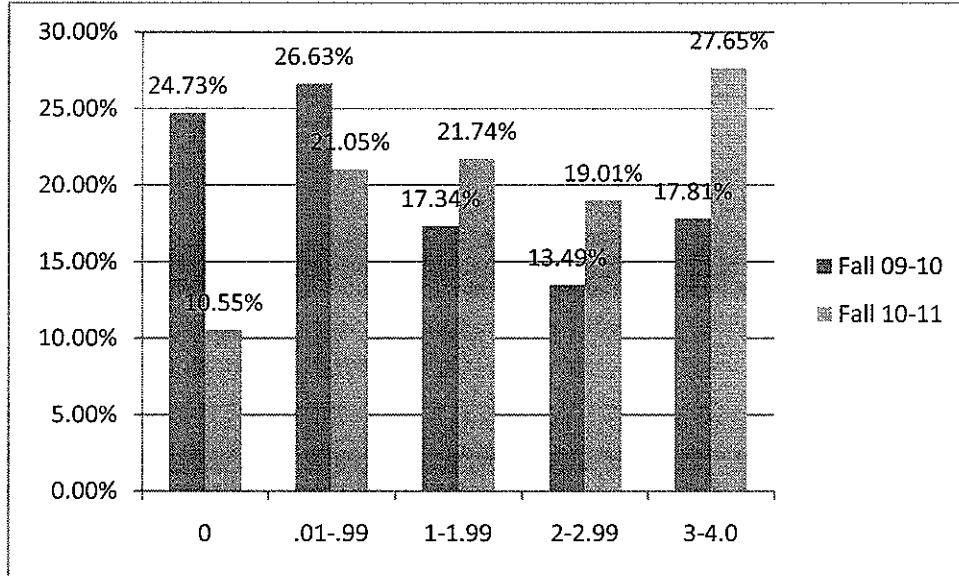
The most significant improvement by far was in the 9th grade class, improving by 82%. Next most significant improvements are among Special Education students and New students, both of which improved 49% - 10% higher than the average.

Improvement of new students compared to returning students is significant because it isolated a number of variables. New students were the only ones required to complete face to face enrollment, but all students received the same treatment when it came to home visits, onboarding, and other efforts aimed at the entire student body. New students improved at a dramatically higher rate (49% improvement for New vs 27% for Returning) suggesting that face to face enrollment made a large impact on student success.



GPA clusters

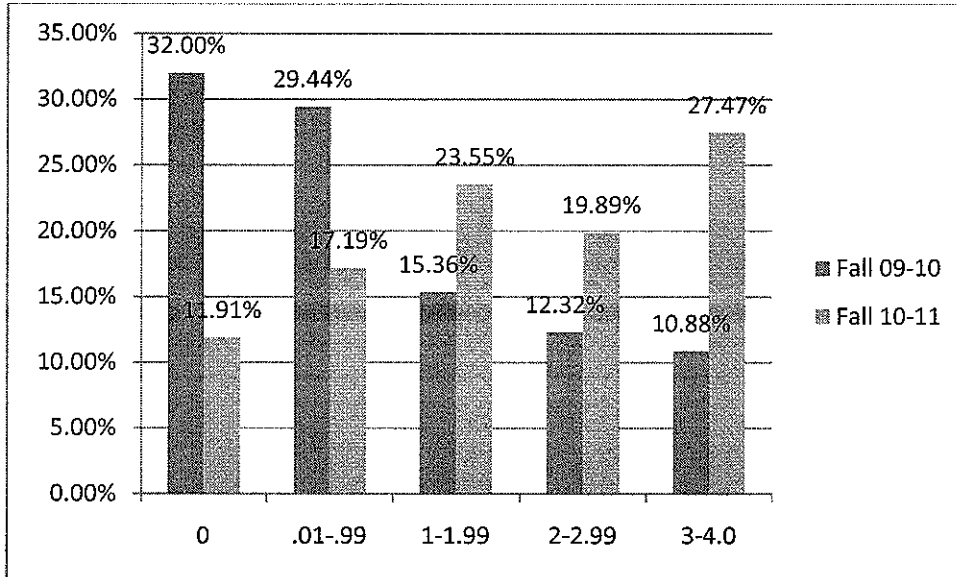
Performance for year was divided into 5 GPA clusters. The Fall 09-10 class (blue bars) shows that our largest groups were in the lowest clusters, but this year the lowest groups have shrunk dramatically and the higher groups have grown. Last year our biggest group was in the second lowest cluster (26.63% in the .01-.99 GPA cluster) but this year our biggest group is in the highest cluster (27.65% in the 3-4.0 cluster). Most significantly, our rate of severely disengaged kids (0.0 GPA) has been more than cut in half; 24.73% of our students fell into this category last year, only 10.55% this year.



| | Fall 09-10 | Fall 10-11 | Change |
|---------|------------|------------|---------|
| 0 | 24.73% | 10.55% | -14.19% |
| .01-.99 | 26.63% | 21.05% | -5.58% |
| 1-1.99 | 17.34% | 21.74% | 4.41% |
| 2-2.99 | 13.49% | 19.01% | 5.52% |
| 3-4.0 | 17.81% | 27.65% | 9.84% |

This trend is even more pronounced looking at the 9th grade class where the trends have literally reversed. Last year we had incredibly high amounts of severely disengaged 9th graders with a 0.0 GPA (32%), but this year that number has shrunk dramatically to 11.91%. At the same time, last year's smallest group was the 3-4.0 cluster (10.88%) but this year it is our biggest group (27.47%).

Respectfully Submitted by:
 Sharon Williams
 4/6/2011



| | Fail 09-10 | Fail 10-11 | Change |
|---------|------------|------------|---------|
| 0 | 32.00% | 11.91% | -20.09% |
| .01-.99 | 29.44% | 17.19% | -12.25% |
| 1-1.99 | 15.36% | 23.55% | 8.19% |
| 2-2.99 | 12.32% | 19.89% | 7.57% |
| 3-4.0 | 10.88% | 27.47% | 16.59% |