



recording of meeting can be heard at the link below

<https://sas.illuminate.com/site/external/installinfo/playback?sid=559&psid=2010-12-07.1539.M.701F07B97850429C0D5915C91801E2.vcr>

**Board of Trustees Meeting**

**December 7, 2010**

- I. Preliminary
  - A. Call to Order: The meeting was called to order at 6:30 pm
  - B. Roll Call: Travis Gery, Bonita Harman, , Mary Steffey  
absent Kadedra Haynes
  
- II. Old Business
  - A. Approve Previous Meeting Minutes  
correction to 3 b to say Ray Ball not Balls  
Travis made a motion to approve the minutes  
second Bonita Harman
  
- III. New Business: Report to the Board
  - A. Enrollment: Tim Kreider gave the enrollment report. Enrollment 6227 as of Nov 30. Retention rate is 84.7%% Attendance. There was an error in last month's data regarding retention. Tim will correct this for next month. Attendance rates went up from last year for a total of 3.7% improvement.  
Finance: report by Ray Ball performance for Oct MTD amounts to deficit of (\$796 K) vs. budget surplus of \$208K). Oct YTD performance to YTD surplus of \$978K vs. Audit update FY 06/07 report is under review by K12 Senior Management changes may be made to footnotes  
FCC on 9/23/10 mandates a number of major changes within the Schools and Libraries Division Federal discount program called E rate Program. Allows for discount to residential areas of school for Telecommunications  
PDE held a webinar re charter school receiving LEA monies and  
Travis made a motion to pay \$25,422.00 to Pa Coalition of Public Charter Schools  
Mary Steffey seconded the motion.  
motion unanimously carried  
Mary Steffey made a motion to approve the financial report  
second by Bonita Harmon  
unanimously carried  
Digital Records Management Proposal is proposed to convert the existing records for about \$ 46,437.48 and a monthly fee of \$157.5 or \$28,815.27 and monthly of \$586.04 by Scantek and then we would use Corrigan Manning to provide the

Motion by Bonita Harmon to approve the above

second by Mary

unanimously passed

Personnel report by Ray Ball: 388 employees as of 11/30/10 with 23 new hires

Mary Steffey made a motion to approve personal report

Bonita Harmon second

motion carried

B. Academic

Sharon Williams gave the report (see board report) academic progress reports released to parents, passing rates need improvement, 2nd National Honor Society Induction (we are only cyber in National Honor Society)

Learning Center Grand Opening

Keystone Exam is mandatory for 8th graders taking Algebra

Dec 1 is the Special Education count.

Sharon also gave teacher survey results that was initiated by the teachers

Travis asked to begin to draft the calendars for next year.

Jane Swan gave the High School report plan for Achievement:

passing rate 50.78% plan is to get 40-49% of student passing by the Holidays

Amy Rupp gave the middle school report. Passing rate is 52%. Back on track

elluminates were held to allow students to take any missing assessments. Now

having back on track sessions for the parents. Action plans will be done for

students. Of the 500 failing 48% are failing 2 subjects. final due dates are Jan 7

for assignments so the

Elementary report by April Nix. First round of Teacher Observation have been completed. The children identified as at risk have been identified. Co-teaching model between regular and special education teachers is in planning stages and will be implemented in every grade level. Back on track achievement plans are being implemented.

Special Education Manager Judy Deemer gave the child count data and we are 94.88% compliant which indicates 7% improvement over last year. Special Education will have their own truancy program which includes phone call/kmails IEP meeting to implement Positive Behavior Support Plan and Home visits. 1072 special education students with 16.76% of the school population.

C. Community and Parent Updates report by Laura Zottola: many new clubs and activities launched. Winter Wonderland of Gingerbread events are taking place statewide, Learning Center Grand Opening, Statewide Food Drives, Operation Agora serving needy families. Clubs offered by k12 international which some of our teachers are leading and allows our students to be in clubs with on a national level. Discussion of Agora Days Out and how they can be approved.

D. Charter Renewal Status/PDE Updates Sharon Williams still no significant response from the state-we are on track for our submissions to the state. Another set of alignments are due in February and k12 is working the curriculum to meet the state standards and will be fully aligned to the new Pa state Standards for next

year. There is a billing transparency request that we are trying to meet regarding services provided by k12.

- E. Policy Recommendations (Action) Academic Progress and Achievement Policy  
see board report for the overview of the policy.  
motion to approve the policy by Mary Steffey  
second by Bonita Harmon  
unanimously approved  
Employee Handbook is still being reviewed by K12 legal

F Public Comment (20 minutes)

- IV. Adjournment Motion to adjourn by Jan 4 , 2011  
please see illuminate link at top of report for recorded meeting and please access the Board Report on the web site for more info

minutes respectfully submitted by Mary Steffey

A handwritten signature in cursive script that reads "Mary Steffey".

---

# Board Report

---

December 7, 2010

---

---



Respectfully Submitted by:  
Sharon Williams  
12/1/2010

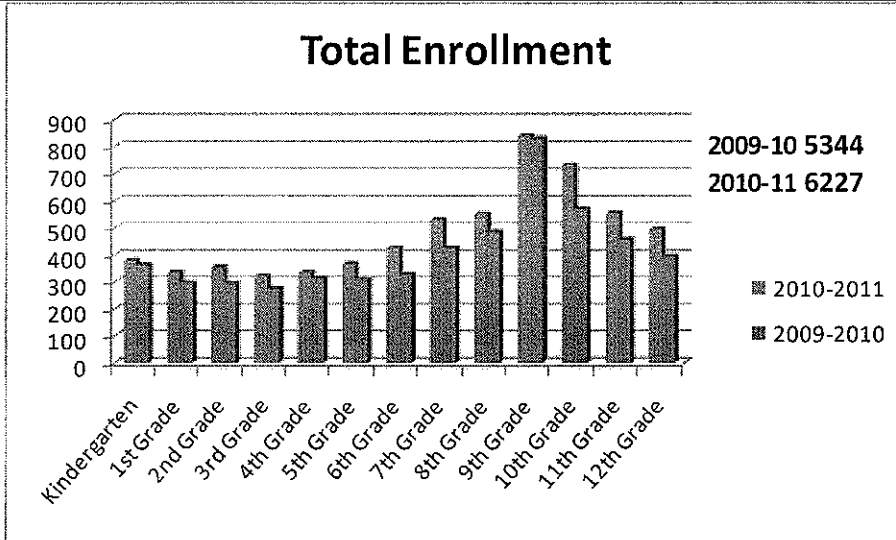


## Contents

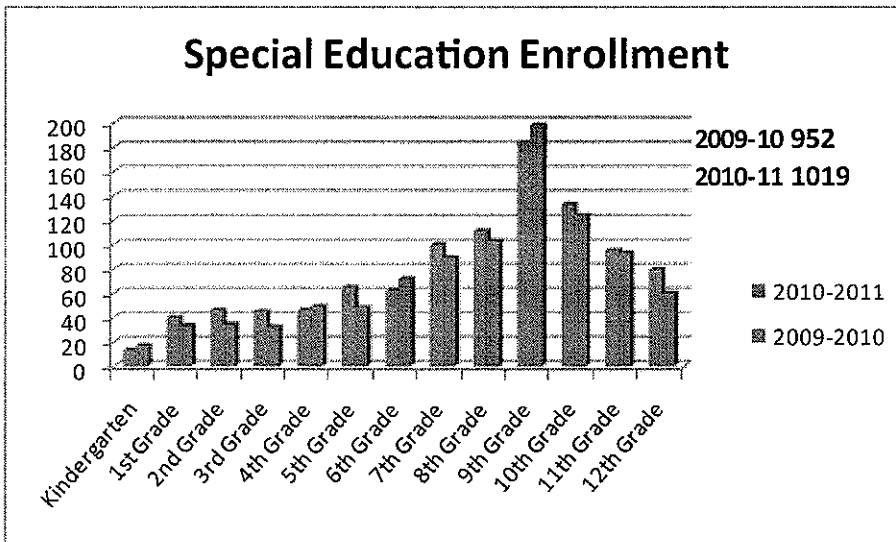
Enrollment.....	3
Retention Rates.....	4
Attendance.....	5
Attendance.....	5
Personnel .....	6
Current Staff.....	6
Finance .....	7
Academics .....	8
Scantron Testing <i>Performance</i> .....	8
High School Summary .....	9
Middle School Summary .....	9
Elementary School Summary .....	10
Upcoming Events .....	10
Community Outreach.....	11
Miscellaneous .....	11
Appendix 1: Enrollment Details .....	13
Appendix 2: Retention Details .....	14
Appendix 3: Attendance Details .....	15
Appendix 4: Other.....	16
Appendix 5: Other.....	17



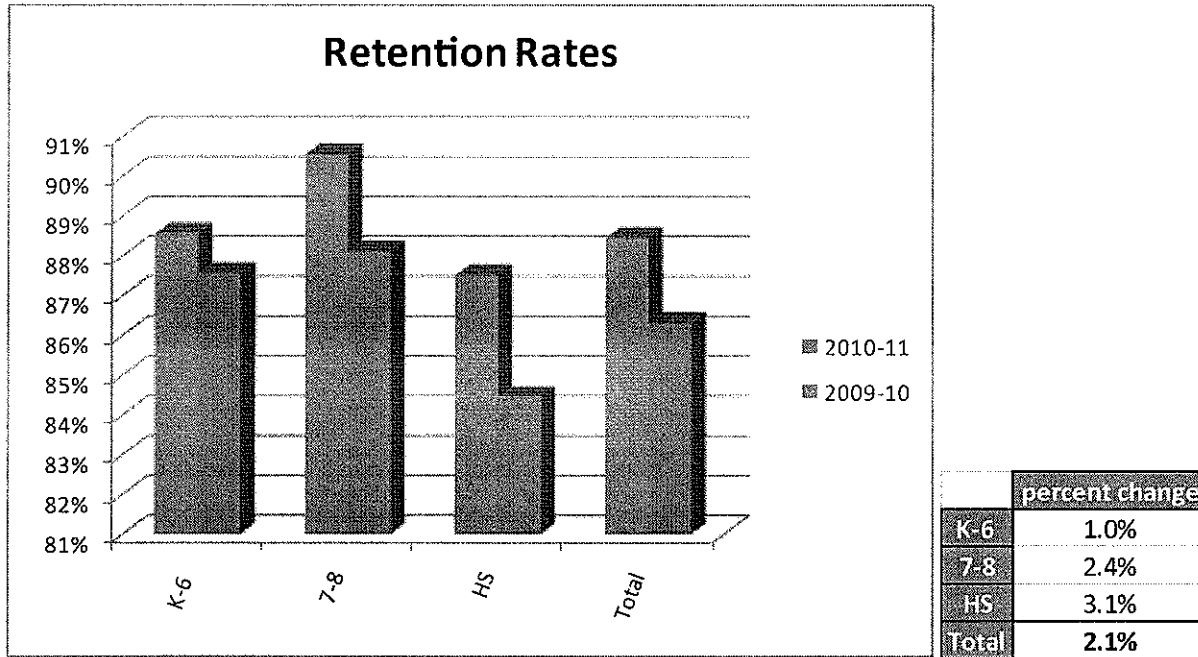
## Enrollment



percent change		
General Ed	Special Ed	Total
18.6%	7.0%	16.5%



## Retention Rates

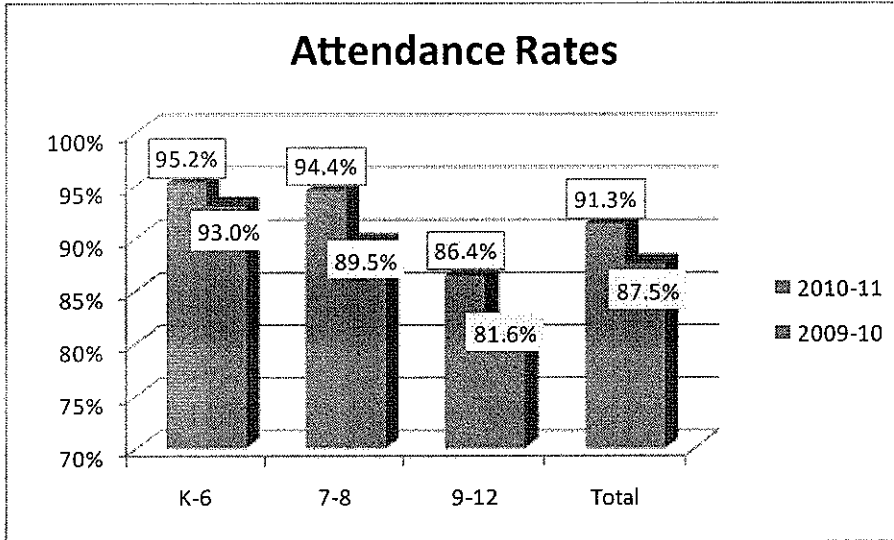


Historically, October and November are two of Agora's highest withdrawal months. Retention rates of students across the board are better over last year. Students in grades 7-12 who were required to attend Face to Face Enrollment sessions this year vs. same the demographic last year (prior to this requirement being implemented) have 20.9 % less withdrawals over last year. Withdrawal data is monitored weekly and we are currently ahead of a 2% overall improvement over last year. Next Month to watch are January withdrawals.

	7-12 new enrollees	withdrawn	retention
2009-2010	2358	450	80.9%
2010-11	2425	372	84.7%



## Attendance



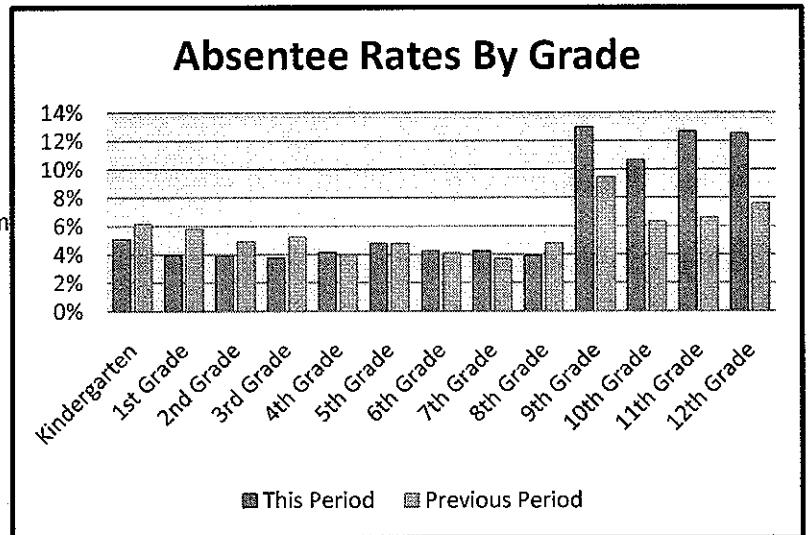
	percent change
K-6	2.2%
7-8	5.0%
9-12	4.8%
Total	3.7%

### Attendance

Attendance rates are up over last year.

Our biggest challenge continues to be in the high school, even though the rates are better overall. The high school team continues to work on attendance and hope to watch these numbers rise.

The truancy prevention team continues to work daily to increase student attendance across all grade levels.



Respectfully Submitted by:  
 Sharon Williams  
 12/1/2010



## Personnel

### Current Staff

388 Employees as of 11/30/2010 with 23 New Hires

**Elementary-4**

Reading Specialist-1  
 Special Education Teacher-2  
 Elementary Teacher-1

**High School- 13**

English-1  
 Science-2  
 Business -1  
 Math-1  
 Art-1  
 Health and Physical Education-2  
 Math Specialist-1  
 Reading Specialist-Learning Center-2  
 Science-2  
 Special Education-1

**Assistant Family Support Coordinator-1**

**Family Involvement Coordinator-1**

**Middle School-1**

Special Education-1

**Para Educator-3**

Total Agora Employees	
November 2010	388

Employee Type	
Teachers	283
Advisors/Guidance	26
Support Staff	79

Teacher Breakdown	
Elementary	82
Middle School	44
High School	106
Special Education	51



Respectfully Submitted by:  
Sharon Williams  
12/1/2010

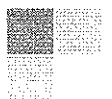


## Finance

---

- Performance for October 2010 MTD amounts to deficit of (\$796K) vs. budget surplus of \$208K.
- October YTD performance amounts to YTD surplus of \$978K vs. budgeted deficit of (\$952K).

Item	Amount
Revenue	\$ 22.5 M
Expenditures	\$23.5 M
Net Fund Balance/Deficit	\$(952,236)



Respectfully Submitted by:  
 Sharon Williams  
 12/1/2010



## Academics

### Scantron Testing

### Performance

#### *New Students to Agora for the 2010-2011 School Year*

Math			
Grade	%At Risk	%On Target	%Advanced
Grade 3	18%	23%	11%
Grade 4	13%	24%	9%
Grade 5	29%	12%	7%
Grade 6	18%	30%	3%
Grade 7	18%	35%	3%
Grade 8	20%	31%	2%
Grade 9	17%	35%	1%
Grade 10	53%	0%	1%
Grade 11	58%	1%	1%
Grade 12	42%	3%	4%
<b>Schoolwide</b>	<b>30%</b>	<b>19%</b>	<b>4%</b>

Reading			
Grade	%At Risk	%On Target	%Advanced
Grade 3	5%	27%	10%
Grade 4	7%	29%	10%
Grade 5	10%	27%	10%
Grade 6	10%	37%	4%
Grade 7	12%	38%	6%
Grade 8	10%	38%	5%
Grade 9	12%	37%	4%
Grade 10	8%	44%	3%
Grade 11	6%	49%	5%
Grade 12	4%	37%	8%
<b>Schoolwide</b>	<b>9%</b>	<b>38%</b>	<b>6%</b>

#### *Returning Students to Agora for the 2010-2011 School Year*

Math			
Grade	%At Risk	%On Target	%Advanced
Grade 3	12%	29%	23%
Grade 4	11%	30%	13%
Grade 5	31%	12%	9%
Grade 6	13%	30%	6%
Grade 7	17%	22%	5%
Grade 8	16%	27%	4%
Grade 9	18%	28%	1%
Grade 10	43%	1%	2%
Grade 11	34%	2%	3%
Grade 12	37%	4%	10%
<b>Schoolwide</b>	<b>24%</b>	<b>17%</b>	<b>6%</b>

Reading			
Grade	%At Risk	%On Target	%Advanced
Grade 3	5%	32%	22%
Grade 4	8%	32%	14%
Grade 5	10%	30%	13%
Grade 6	10%	32%	7%
Grade 7	10%	27%	7%
Grade 8	8%	31%	8%
Grade 9	13%	29%	6%
Grade 10	8%	31%	7%
Grade 11	5%	28%	7%
Grade 12	6%	30%	15%
<b>Schoolwide</b>	<b>8%</b>	<b>30%</b>	<b>10%</b>

Respectfully Submitted by:  
Sharon Williams  
12/1/2010

### High School Summary

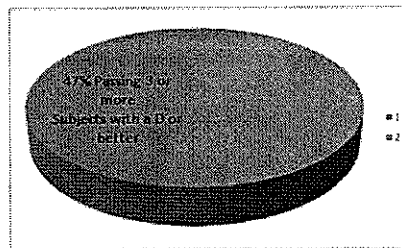
- **Passing rate: 50.87% Failing rate 49.13%**
- Second National Honor Society ceremony occurred on November 21st inducting 14 high school students

### High School Plan for Student Achievement

- Get 40-59% students passing by the holiday-3 and ½ weeks!
- Get 0-39% up 20% by the holiday-3 and ½ weeks!
- 11-22: all students with a course average of 40-59% were called and told all assignments past due could be made up without a penalty. They were also encouraged to call their teachers .
- 11-29: all students with a course average of 0-39% will be called with similar message, encouraging to kmail teachers, attend sessions and make up work. Teachers will send missing assignment kmails on Fridays .  
Opportunities: catch up sessions, retake quizzes, tests, resubmit work.

### Middle School Summary

Middle School Passing Rates as of  
11-29-10



- Back on Track Elluminate Sessions week of 11/29
  - Walkthrough of Quia and Snap grades
  - Allow students to take any missing assessments LIVE
- Live phone calls to those who do not attend Back on Track sessions
- Addition of Quia quiz link on each teacher Graded Assignment
- Addition of Quia quiz link in Snap grades
- Homeroom meetings weekly
- Reminder k-mails sent to students who are not passing
- Parent workshops to help with the turning in of assignments
- Action plans will be implemented
- Create schedule for students with all sessions listed-
- Block each day of specific subjects for students to complete daily.
- Daily IM check ins
- Create a holiday schedule for students to catch up on assignments.



Respectfully Submitted by:  
Sharon Williams  
12/1/2010



### Elementary School Summary

- The first round of Teacher Observations based on the Essential Elements of Instruction have been completed.
- Progress Reports were K mailed to parents on November 22.
- Co Teaching model between general education and special education teachers is in the planning stages and will be implemented in every grade level.
- Back on track achievement plans are being implemented for students who have not made sufficient progress at this point of the school year.

### Clubs and Activities

- Many Clubs kicked off throughout the month of November including:

#### K-6 Clubs

- Agora Art Gallery K-6
- Baby Sitter Certification Club 5-8 \*\*
- Book Buddies K-6
- Brain Teasers Club K-6
- Cooking/Culinary Club K-6
- Creative Writing K-6
- Cyber Stackers Club K-6
- Geography Club K-6
- Travel Club K-6
- Virtual Field Trip Club K-6

#### 7-8 Clubs

- Bible Club 7-8
- Multimedia Club 7-8
- Photography Club 7-8
- Agora Art Gallery 7-8

#### 7-12 Clubs

- Anime Club 7-12
- Book Club 7-12
- Craft Club 7-12
- Cooking/Culinary Club 7-12
- Debate Club 7-12
- Gaming Club 7-12
- Healthy Eating/Vegetarian Club 7-12
- SADD Club 7-12
- Student Government Association 7-12
- Travel Club 7-12
- Wilderness Challenge Club 7-12
- Yearbook 7-12
- Prom Committee 9-12
- Sports Talk Club 9-12
- "The Arts" Club 9-12
- Young Writers Network 9-12

#### 9-12 Clubs

- Agora Art Gallery 9-12
- Agora Bloggers 9-12
- Bible Club 9-12
- DECA 9-12
- FBLA 9-12
- FFA 9-12
- Multimedia Club 9-12
- Photography Club 9-12

#### K-12 Clubs

- Ski Club K-12
- Seeds of Change K-12
- Volunteer Club K-12

### Upcoming Events

- Winterland of Gingerbread Events are occurring statewide throughout the month of December



Respectfully Submitted by:  
Sharon Williams  
12/1/2010  
Community Outreach



Statewide Food Drives Kicked off at Winterland of Gingerbread and ADO events  
School wide Operation Agora will serve needy Agora families sponsored by Agora teachers.

### Board Policy Recommendations

#### Attendance policy

#### Academic Progress and Achievement

It is the expectation of Agora Cyber Charter School that all students can and will achieve academic success and that consistent attendance and engagement in daily coursework is essential to that success. At Agora, attendance involves daily log in to each course and attendance at all mandatory sessions. Engagement involves completion of assigned daily lessons, which includes submission of assigned coursework. Specifically, non-compliance in these areas is:

- ◆ Three or more unexcused absences in a 30 day period, not necessarily consecutive
- ◆ Chronic failure to complete daily assigned lessons for five days
- ◆ Grades K-6: Failure to show course progress for five days
- ◆ Grades 7-12: Failing three or more courses with a course average of 30% or below and/or has a course average of 30% or below

Any student who is non-compliant with any of the criteria above will be required to follow the schooling plan below:

- ◆ Must attend live check in sessions for 10 consecutive days
- ◆ Must complete all required coursework for 10 consecutive days

Failure to comply: the days the student does not attend live sessions will be marked as unexcused absences and the student will subject to truancy violations.

#### Miscellaneous

To date 5,026 home visits have been made. Of our current student population enrolled with us at least two weeks, 82% have received at least one home visit. Here is the breakdown by grade:

Grade	% with at least one Home Visit
Kindergarten	92%
1st Grade	91%
2nd Grade	94%
3rd Grade	92%
4th Grade	89%
5th Grade	87%
6th Grade	87%
7th Grade	88%
8th Grade	89%
9th Grade	72%



Respectfully Submitted by:  
Sharon Williams  
12/1/2010



10th Grade	70%
11th Grade	74%
12th Grade	73%
<b>Schoolwide</b>	<b>82%</b>



Respectfully Submitted by:  
 Sharon Williams  
 12/1/2010



## Appendix 1: Enrollment Details

	2010			2009			percent change		
	General Ed	Special Ed	Total	General Ed	Special Ed	Total	General Ed	Special Ed	Total
Kindergarten	367	13	380	346	17	363	6.1%	-23.5%	4.7%
1st Grade	296	40	336	263	33	296	12.5%	21.2%	13.5%
2nd Grade	310	46	356	261	34	295	18.8%	35.3%	20.7%
3rd Grade	277	45	322	242	32	274	14.5%	40.6%	17.5%
4th Grade	289	46	335	266	49	315	8.6%	-6.1%	6.3%
5th Grade	302	65	367	261	48	309	15.7%	35.4%	18.8%
6th Grade	365	62	427	256	72	328	42.6%	-13.9%	30.2%
7th Grade	430	100	530	337	89	426	27.6%	12.4%	24.4%
8th Grade	441	111	552	383	103	486	15.1%	7.8%	13.6%
9th Grade	656	184	840	633	198	831	3.6%	-7.1%	1.1%
10th Grade	599	133	732	446	124	570	34.3%	7.3%	28.4%
11th Grade	461	95	556	365	93	458	26.3%	2.2%	21.4%
12th Grade	415	79	494	333	60	393	24.6%	31.7%	25.7%
<b>Grand Total</b>	<b>5208</b>	<b>1019</b>	<b>6227</b>	<b>4392</b>	<b>952</b>	<b>5344</b>	<b>18.6%</b>	<b>7.0%</b>	<b>16.5%</b>



Respectfully Submitted by:  
 Sharon Williams  
 12/1/2010



## Appendix 2: Retention Details

	2010			2009			percent change
	total enrolled	11-30 enrolled	2010-11	total enrolled	11-30 enrolled	2009-10	
Kindergarten	429	380	88.6%	411	363	88.3%	0.3%
1st Grade	376	336	89.4%	339	299	88.2%	1.2%
2nd Grade	404	356	88.1%	342	295	86.3%	1.9%
3rd Grade	361	322	89.2%	319	274	85.9%	3.3%
4th Grade	386	335	86.8%	360	315	87.5%	-0.7%
5th Grade	433	367	84.8%	348	309	88.8%	-4.0%
6th Grade	460	427	92.8%	373	327	87.7%	5.2%
7th Grade	582	530	91.1%	477	426	89.3%	1.8%
8th Grade	613	552	90.0%	558	486	87.1%	3.0%
9th Grade	974	840	86.2%	967	832	86.0%	0.2%
10th Grade	837	732	87.5%	678	569	83.9%	3.5%
11th Grade	635	556	87.6%	553	458	82.8%	4.7%
12th Grade	550	494	89.8%	467	392	83.9%	5.9%
K-6	2849	2523	88.6%	2492	2182	87.6%	1.0%
7-8	1195	1082	90.5%	1035	912	88.1%	2.4%
HS	2996	2622	87.5%	2665	2251	84.5%	3.1%
<b>Total</b>	<b>7040</b>	<b>6227</b>	<b>88.5%</b>	<b>6192</b>	<b>5345</b>	<b>86.3%</b>	<b>2.1%</b>



Respectfully Submitted by:  
 Sharon Williams  
 12/1/2010



### Appendix 3: Attendance Details

#### Attendance Rates

	2010-11	2009-10	percent change
K-6	95.2%	93.0%	2.2%
7-8	94.4%	89.5%	5.0%
9-12	86.4%	81.6%	4.8%
<b>Total</b>	<b>91.3%</b>	<b>87.5%</b>	<b>3.7%</b>

#### Attendance Caller Data

Date	# Calls Made	Families Reached	families reached of calls attempted
10/20/2010	445	199	45%
10/21/2010	435	185	43%
10/22/2010	595	248	42%
10/25/2010	440	168	38%
10/26/2010	486	194	40%
10/27/2010	504	214	42%
10/28/2010	433	169	39%
10/29/2010	484	195	40%
11/1/2010	473	201	42%
11/2/2010	427	163	38%
11/3/2010	362	136	38%
11/5/2010	495	202	41%
11/8/2010	400	128	32%
11/9/2010	439	169	38%
11/10/2010	389	139	36%
11/11/2010	440	167	38%
11/12/2010	301	117	39%
11/15/2010	362	140	39%
11/16/2010	403	147	36%
11/17/2010	428	146	34%
11/18/2010	387	156	40%
11/19/2010	414	163	39%
<b>totals</b>	<b>9542</b>	<b>3746</b>	<b>39%</b>
<b>avg</b>	<b>434</b>	<b>170</b>	<b>39%</b>

Respectfully Submitted by:  
Sharon Williams  
12/1/2010



## Appendix 4: Other

---



Respectfully Submitted by:  
Sharon Williams  
12/1/2010



## **Appendix 5: Other**

---

