

Hoosier Academy, Inc.
Regular Board Meeting Minutes
December 20, 2016

Upon determining the presence of a quorum, Board President Marske called the meeting to order at 5:40P.M. Tuesday, December 20, 2016.

Chairman Marske read the Board Mission: 1) make sure that our school accomplishes the outcomes it was chartered to produce (i.e. student achievement) and 2) Make sure that nothing illegal, unethical, or imprudent occurs.

B. Attendance:

Name	Present	Absent	Arrived Late	Departed Early	Electronic Participation
John Marske	✓				
John Luta					✓
George Giltner					
Gary Meyer	✓				
April Turner					✓
Shawn Justice	✓				

Others in Attendance:

K12 Representatives	HA Staff	Community Members
Byron Ernest Patti Ashley Cindy Wright, virtual Dominique Franklin Chris Chalker Ken Goff Kathy Coe Patsy Woods Kent Martin Jennifer Waterman	Dana Smith Jennifer Lyons Rachel Borrelli Sara Brooks Dana Smith Jill Landers Jennifer Lyons Alissa Davis	

C. Approval of the November Minutes:

Mr. Meyer motioned to approve the November 29, 2016 minutes. Mr. Justice seconded. Roll Call: Mr. Luta, yes; Mr. Giltner, sustained; Mr. Meyer, yes; Ms. Turner, yes; Mr. Justice, yes; and Mr. Marske, yes.

D. Adoption of the December Agenda:

Mr. Marske presented the December agenda. Mr. Meyer motioned to adopt the December 20th agenda as presented. Mr. Giltner seconded. Roll Call: Mr. Luta, yes; Mr. Giltner, yes; Mr. Meyer, yes; Ms. Turner, yes; Mr. Justice, yes; and Mr. Marske, yes.

E. Oral Communication:

No oral communication.

III. Hoosier Academy, Governance and Organization

A. Resolution 2016-26 Caito Lease Extension

We are still in the process of determining the best place to consolidate our two buildings in the coming year. We are not in a position to make a decision on which place is best, but we do know is that our lease for Caito is set to expire August of 2017; realistically, whatever decision that is going to be made will involve blueprints and regard a build out that would not be done by August of 2017.

Resolution 2016-26 allows for us to extend the Caito lease for another year, to 2018 with no increase in rate, and locking in the same rate.

Mr. Justice motioned to approve Resolution 2016-26, Resolution Caito Lease Extension. Mr. Giltner seconded. Roll Call: Mr. Luta, yes; Mr. Giltner, yes; Mr. Meyer, yes; Ms. Turner, yes; Mr. Justice, yes; and Mr. Marske, yes.

II. Hoosier Academy, Financial, Legal, and School Operations

A. Financial Report, Patti Ashley

The Finance Committee reviewed the November vouchers for Indy, Virtual and Insight. Some of the expenses included payments to K12, payroll, software, testing rentals and VTG; nothing unusual. VTG is the annual license.

Mr. Meyer motioned to submit the November 2016 vouchers for all three schools for audit. Mr. Giltner seconded. Roll Call: Mr. Luta, yes; Mr. Giltner, yes; Mr. Meyer, yes; Ms. Turner, yes; Mr. Justice, yes; and Mr. Marske, yes.

Ms. Ashley reviewed the Forecast Presentation. In revenue, the state funding increased due to an increase in rate per student, and the overall school expenditures for OLS/Curriculum and material projection decreased. The cash flow inflows were from grant funding and state aid; and the outflows were K12 payments.

Mr. Meyer motioned to accept the November financials for audit. Mr. Justice seconded. Roll Call: Mr. Luta, yes; Mr. Giltner, yes; Mr. Meyer, yes; Ms. Turner, yes; Mr. Justice, yes; and Mr. Marske, yes.

The external audit done by the CPA Firm, Donovan is finished. K12 is in the process of reviewing the draft from Donovan. K12 will be done with reviewing by the December 31st deadline. Ms. Ashley is confident that the audit will be done before the deadline.

Mr. Marske reminded the Board of the process in that one member of the finance committee will have an exit interview with the auditor, which will enable us to meet the December 31st deadline. We will then discuss the audit in January.

B. Community Report, Rachael Borrelli

Rachael Borrelli reviewed some of the December events. Parent Advisory Committee; mom's coffee; ice skating; winter dance; gingerbread make and take; and read the book/see the movie. Events planned for January and the beginning of second semester are 10 strong start super sessions; library/tutoring days; children's museum; police museum; and the Indiana State museum.

Ms. Borrelli shared that at the December PAC meetings, parents talked about the different ways in which they as a group could reach families; the Hoosier Facebook page is where a lot of parents go to ask questions and get help, so PAC is looking at ways in which they can better assist families on that site.

Learning Coaches were given information about PAC at the beginning of the year, and had to apply by a set deadline if interested in being part of the group.

C. Enrollment Report, Kathy Coe

As we begin to look at the second semester start date of January 23rd, we are having a lot of conversations with our waitlist families to make sure they are going to be enrolled in the best school for them. We DO NOT put them in the school that we think is best for them, we provide them with the BEST information to help them make the decision on which school they think would be best for their student. Before families even start with us, they are given a success criteria; the things that they must do in order to be successful at Hoosier. Things like attend testing, have internet, expected to be in virtual classrooms, and logging in to do work every day are just a few examples of what we say before their official start date. Once they have started, teachers are also providing them with the same success criteria, FAST members, and Academic Admins are providing the same success criteria if not more ways to be successful.

Currently the hybrid enrollment is at 234; virtual is at 3222; and Insight is at 669. The combined total for all three schools is 4125. There has been a combined total of 765 withdrawals since August. Expulsions are because of truancy. Kathy will run the numbers on WD based on how long a student has been enrolled.

**Hoosier Academy Indianapolis
Enrollment 2016-2017 School Year**

Total Enrollment

Grade	August	Sept	October	November	December
K	16	14	15	15	17
1	15	16	16	16	15
2	14	13	17	17	17
3	21	18	17	17	17
4	19	18	16	16	16
5	24	23	22	21	21
6	16	14	21	19	19
7	20	21	21	19	17
8	23	20	24	23	21
9	27	24	25	24	24
10	27	17	19	18	17
11	20	21	19	18	18
12	18	19	17	17	17
Grand Total	252	256	250	240	234

Hoosier Academy Virtual Enrollment 2016-2017 School Year

Total Enrollment

Grade	August	Sept	October	November	December
K	170	185	189	177	170
1	156	142	159	132	131
2	214	194	232	189	187
3	239	220	217	214	210
4	208	200	205	205	197
5	211	196	201	200	196
6	214	217	213	212	208
7	239	237	231	226	212
8	300	305	309	304	307
9	303	305	310	313	304
10	477	493	491	483	452
11	366	391	406	386	370
12	320	301	295	287	255
Grand Total	3509	3427	3427	3321	3232

Insight School of Indiana Enrollment 2016-2017 School Year

Total Enrollment

Grade	August	Sept	October	November	December
7	85	84	82	87	84
8	87	76	78	80	79
9	74	83	84	93	91
10	112	127	124	123	122
11	130	131	134	133	127
12	124	124	127	120	114
Grand Total	660	680	689	683	619

Total All Schools

Grade	Hoosier and Hoosier-VS	ISIM	Grade Total
K	15	179	194
1	15	188	203
2	17	187	204
3	17	210	227
4	18	197	215
5	21	196	217
6	19	208	227
7	17	212	229
8	21	227	248
9	24	204	228
10	17	452	469
11	18	170	188
12	17	255	272
Grand Total	214	3222	3436

Withdrawals August – November 2016-2017 School Year Top Reasons

	Hoosier Academy - Indianapolis	Hoosier Virtual Academy	Insight School of Indiana	Grand Total
Transferred to another Indiana School	19	325	47	391
Expulsion	4	168	35	207
HomeSchool		118	14	132
Moved out of State		25	6	31
Total	23	536	102	661

D. Compliance Report, Kathy Coe

Submitted and signed off on SPED today. Testing label report was extended to tomorrow and that is needed to build the testing labels for upcoming testing. Form 9 is due in January and ARC for Ball State.

E. Personnel Report, Nadina McFann

There is one new hires for Insight; two special education teachers- a school psych and an elementary virtual sped teacher; 2 teachers on medical leave; and no staff resignations.

III. Hoosier Academy- School and Student Outcomes

A. Academic Report, Dr. Chris Chalker, Dominique Franklin, Jill Landers, and Jody Wilson

Academic reports are attached. The Board likes how they added the action steps to the reports. There is also a report that shows that students who have been enrolled three or more years have proficiency rates between 6 and 22 points higher than newly-enrolled students.

B. FAST Report, Kent Martin

FAST report is attached.

C. Priority School Visit Briefing, Dominique Franklin

Summary report is attached.

D. 2017-2018 School Calendar, Dr. Byron Ernest

The attached calendar proposal has been reviewed by teachers and parents, and changes have been made. The start of school is August 21st, with teachers coming back on the 1st; and breaks are positioned so that the end of a grading period is after the long breaks so that students can have that week to work and get caught up. Back to school expos will take place before school. School is 180 days.

Since the calendar has had input from all stakeholders, the Board will approve the 2017-2018 school calendar as presented. And the hybrid track days will remain the same- 7-12 will attend the learning center Monday and Tuesday, and the K-6 will attend the learning center Thursday and Friday. Mr. Luta motioned to approve the 2017-2018 School Calendar. Mr. Meyer seconded. Roll Call: Mr. Luta, yes; Mr. Giltner, yes; Mr. Meyer, yes; Ms. Turner, yes; Mr. Justice, yes; and Mr. Marske, yes.

V. Board Development

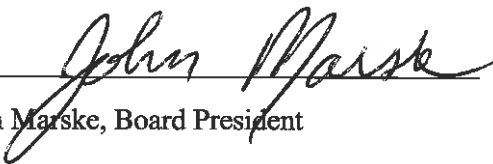
A. Items for next month:

1. Marketing Plan
2. DCS Reporting
3. School Grade Presentation

Next Board meeting is January 31, 2017, Franklin Rd, at 5:30pm.

Being no further business the meeting adjourned at 7:08pm

Signatures for Approval of the December 20, 2016 Minutes.

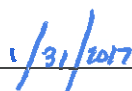


John Marske, Board President

Date



George Giltner, Board Secretary



Date

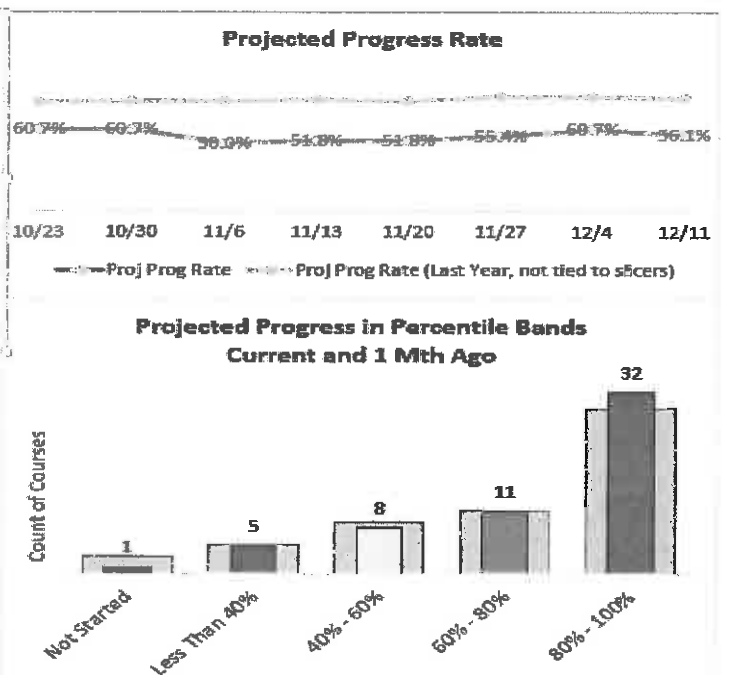
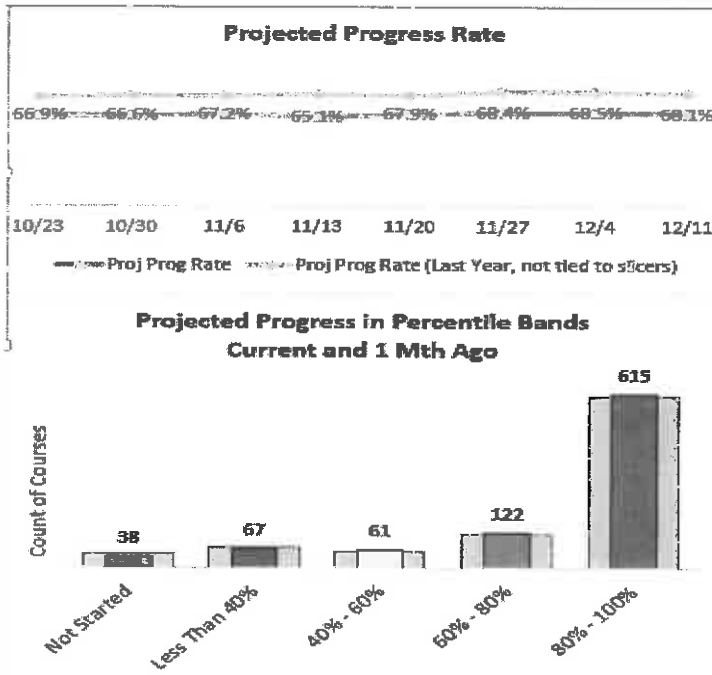
Hoosier Academies

K-5 Hybrid School Board Academic Report

December 20, 2016

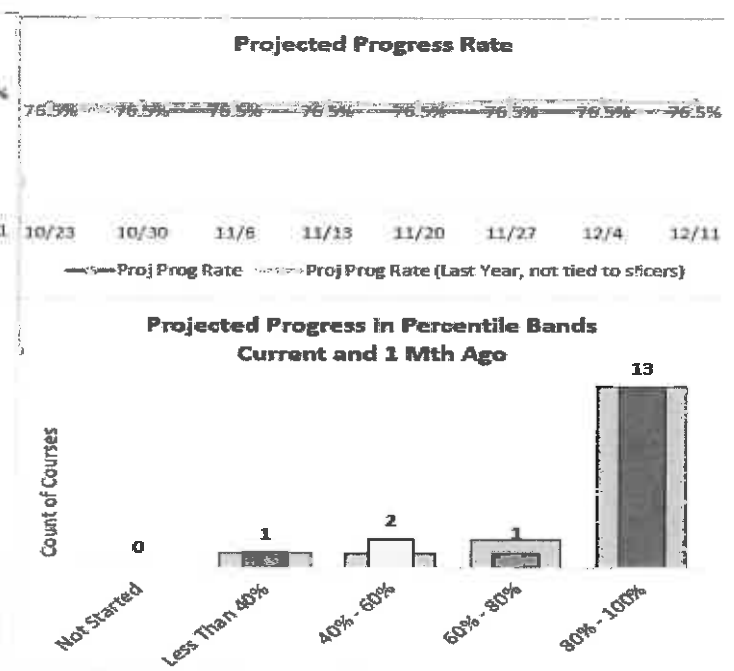
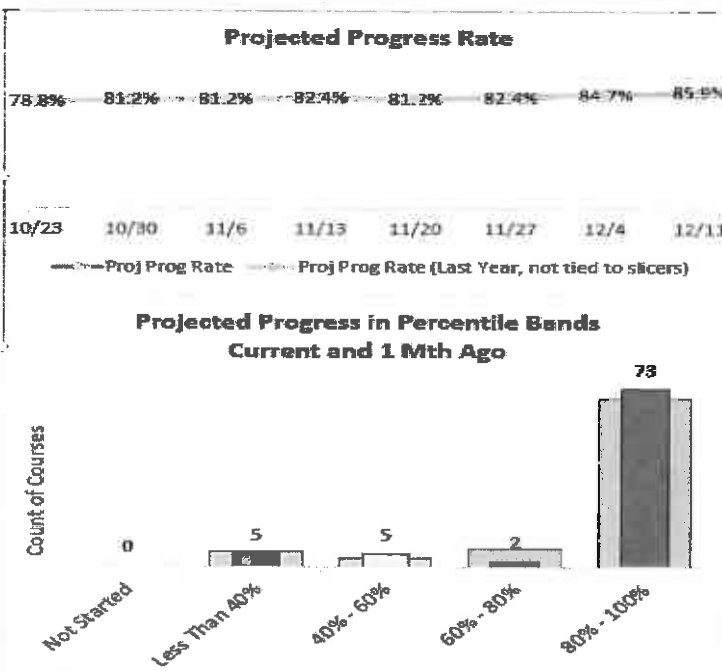
GRADES K-5 PROGRESS RATES

GRADES K-5 SPECIAL ED. PROGRESS RATES



GRADE 3 ELA PROGRESS RATES

GRADE 3 MATH PROGRESS RATES



Grades K-5 Hybrid Progress Rates and Action Steps

The k-5 progress rates are 10 percentage points lower than last year. Special ed. students have a progress rate that is 12 percentage points lower than their general ed. peers and nearly 30% lower than last year. The third grade IREAD testing group has consistent progress compared to last year in both ELA and Math.

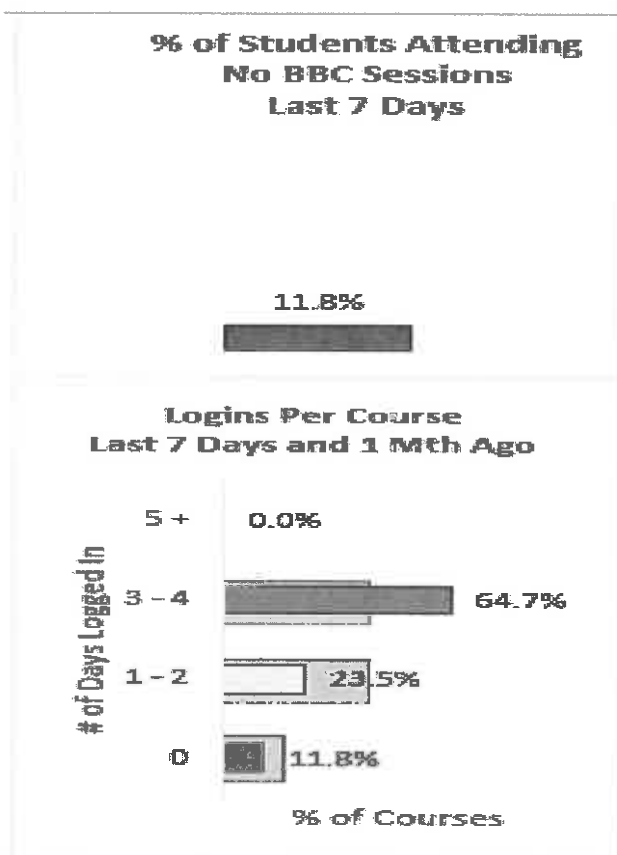
K-5 PROGRESS RATE ACTION STEP: Continue to support improvement in fifth grade progress rates through instructional coaching, classroom walkthroughs, and student intervention.

SPECIAL EDUCATION ACTION STEP: Working toward filling the open special education position.

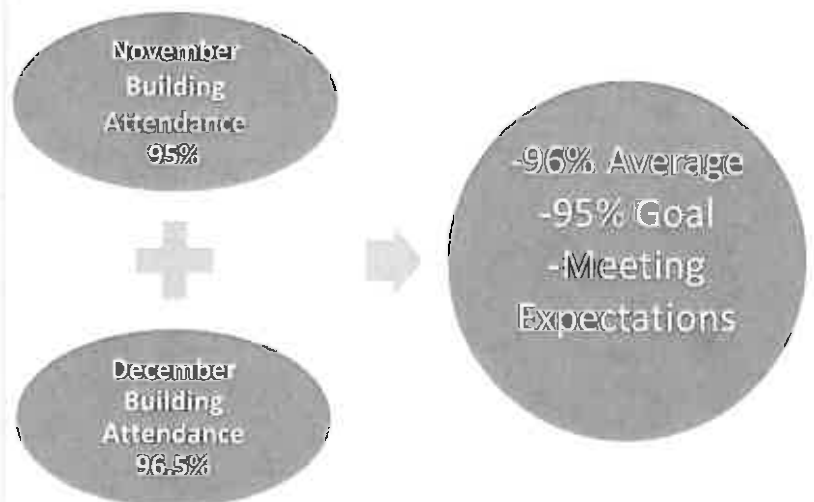
THIRD GRADE ACTION STEP: The new third grade teacher is preparing students for IREAD/ISTEP by focusing on the Power Standards (check plus and check).

K-5 Hybrid Virtual & Building Attendance

GRADES K-5



GRADES K-5 BUILDING ATTENDANCE

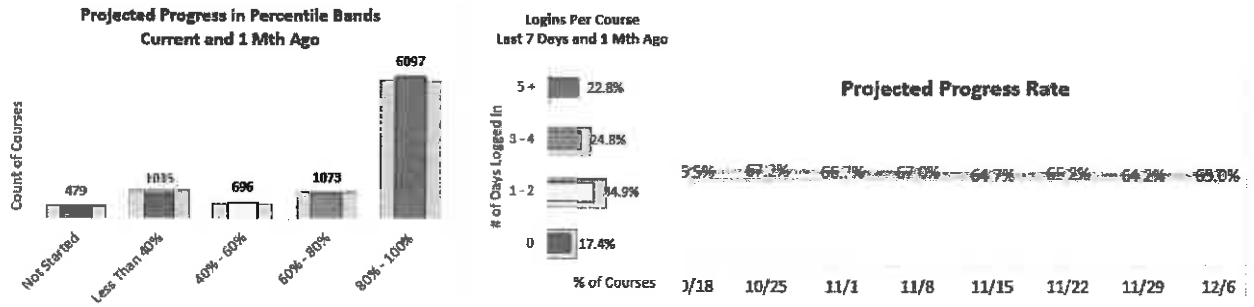


Grades K-5 Hybrid Virtual/Building Attendance and Action Steps

The percentage of students attending no BBC sessions over a seven-day period continues to decrease to a new low of 11.8%. The number of “yellow” students attending 1-2 days has decreased due to a big increase in 3-4 day attendance (green). Building attendance continues to be impressive with an increase to 96% overall, exceeding the 95% goal.

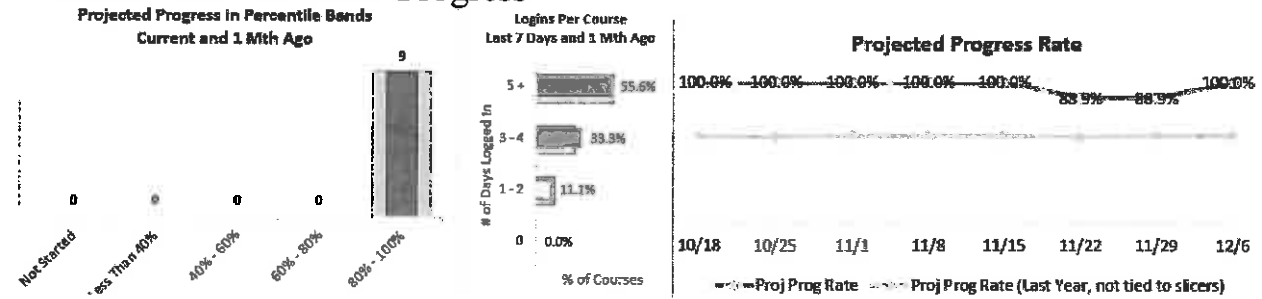
ACTION STEPS: Continuing the overall improvement in all attendance areas by keeping the communication to parents and learning coaches flowing in all directions and through all means.

Virtual K-5 Progress



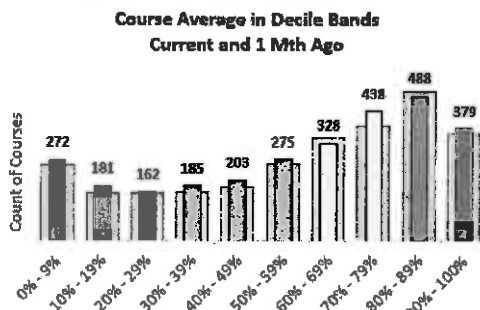
This data shows that 35% of kindergarten through fifth grade courses are being logged in to 2 or less days each week; this will be a focus area moving forward in data meetings with grade level teachers. 65% of the total number of courses (6097/9380) in grades kindergarten through 5th grade are at 80-100% progress rates at the current time.

3rd Grade Title I & SPED Progress



3rd grade title 1 and special education students are regularly logging in to courses. Nine out of nine courses show current progress at 80-100%. 56% of these students are logging in to courses five or more days each week to continue positive progress in their coursework. The dip on the progress chart during 11/22 and 11/29 was most likely due to the Thanksgiving Break.

Virtual 6-8 Pass Rates



Grades 6 through 8 pass rates are trending higher than the 2015-16 school year. The colored bars indicate course averages within the last week and the gray bar shows last month's averages. The majority of course averages are 60% and higher.

Class Connect Attendance

1st grade



Student Counts

Total Inv:	1229
Total Att:	783
Avg Hrs Att:	3.34
Att. Rate:	63.7%

5th grade



Student Counts

Total Inv:	833
Total Att:	483
Avg Hrs Att:	2.34
Att. Rate:	58.0%

7th grade- Math/ELA



Student Counts

Total Inv:	1010
Total Att:	517
Avg Hrs Att:	1.86
Att. Rate:	51.2%

7th grade- we are m

Last report showed kindergarten, 3rd, and 6th grades which were high attendance rates at 71%, 66%, and 79%. The above data shows required class connect attendance for the 11/30-12/6/16. The expectation of required attendance for the school year was communicated to teachers, students, and learning coaches at the beginning of the school year and repeatedly via teachers and principal via regular emails and phone calls. All small group sessions are required for students invited, whole group sessions are optional at this time; all students must attend a minimum of 3 class sessions each week.

Adjustments:

- Attendance/invitations to class sessions
 - 7th and 8th grade has re-evaluated their weekly schedules and adjusting class times and ways of inviting students by instructional level
 - Whole group class sessions
 - Basic and below basic students will be invited to whole group math and ELA classes; these will be listed on their schedules as REQUIRED
 - Advanced and proficient students will be invited to whole group math and ELA classes, listed as OPTIONAL.
 - Small group class sessions
 - Basic/below basic students will be required 2-4 ELA and math sessions
 - Advanced and proficient will be required 1-2 ELA and math sessions
 - K-5 attendance
 - We are making referrals to the FAST team for students who are 16% or more behind in progress and or have 5-9+ days since their last log in to the OLS.
 - Additionally, Mrs. Wilson is contacting families via email with a stern reminder to attend class sessions.
 - FAST team members are being invited to grade level data meetings to report on follow up actions of referrals.
 - Teachers are running attendance/participation incentives for their small groups.
 - Attendance parties, sending rewards via email or snail mail, recognition in class connects with CC award and giving 'game time' in break out rooms

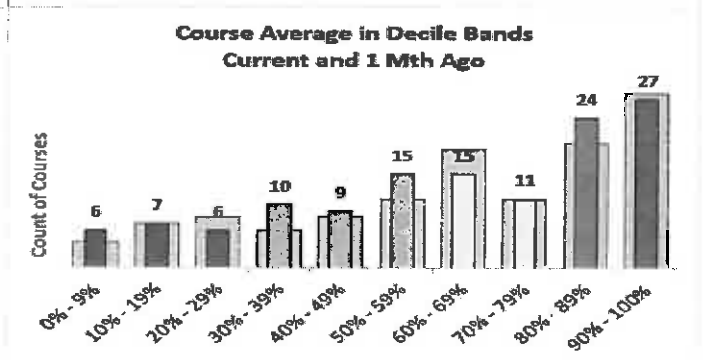
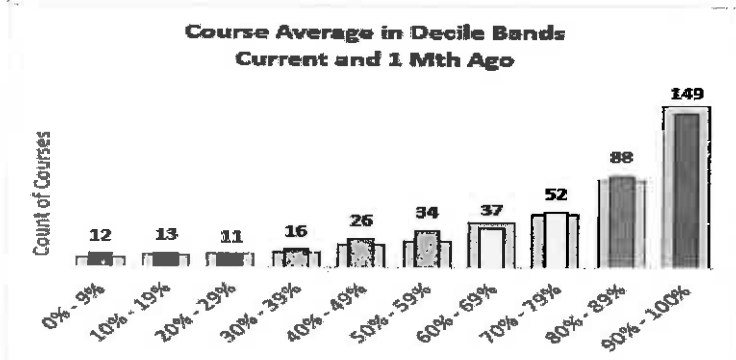
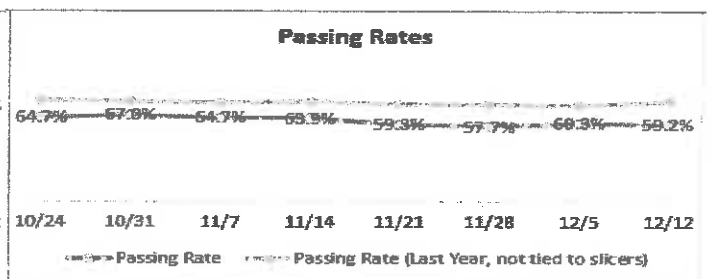
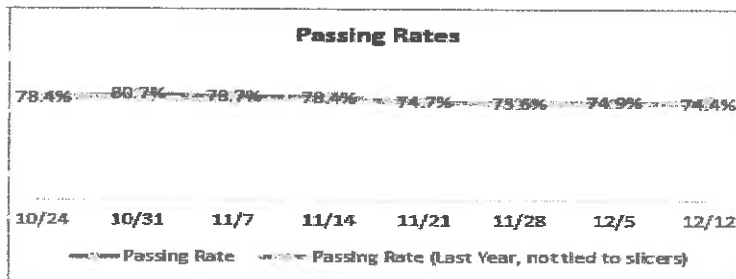
Hoosier Academies

6-12 Hybrid School Board Academic Report

December 20, 2016

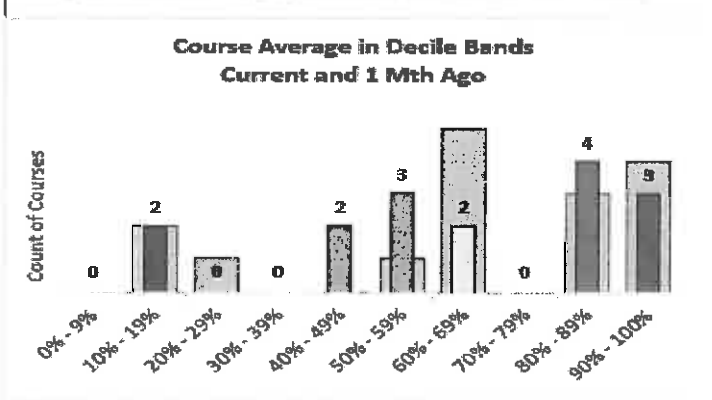
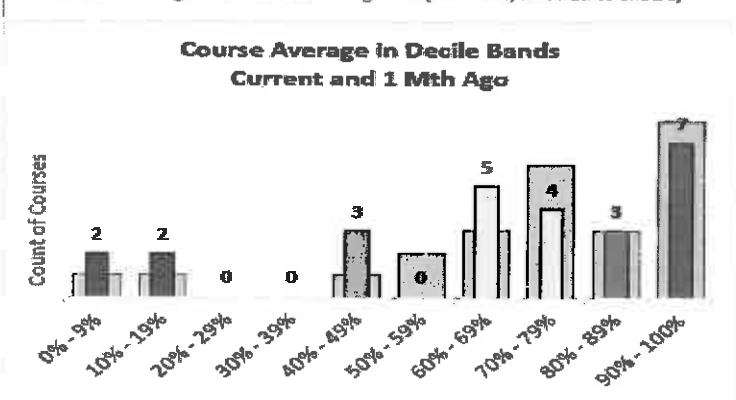
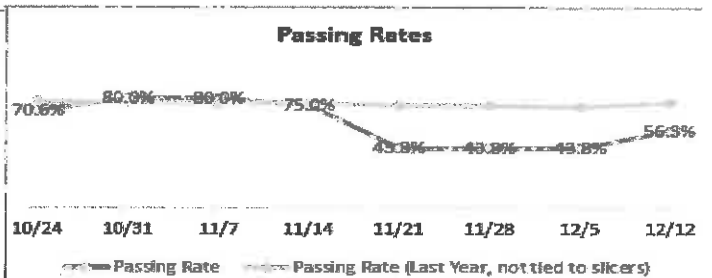
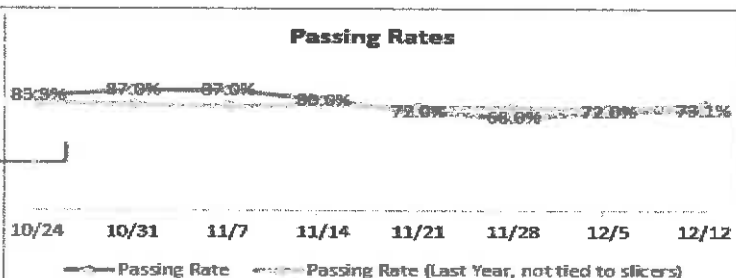
GRADES 9-12 PASSING RATES

GRADES 9-12 SPECIAL ED. PASSING RATES



GRADE 10 ELA PASSING RATES

GRADE 10 MATH PASSING RATES



Grades 9-12 Hybrid Pass Rates and Action Step

The 9-12 pass rates are consistent to last year's pass rates. Special Ed. students have a passing rate that is 15% lower than their general ed. peers and 18% lower than last year. 10TH grade ELA is consistent with last year and math dropped 31%.

SPECIAL EDUCATION ACTION STEP: Working to fill the special education position open since August.

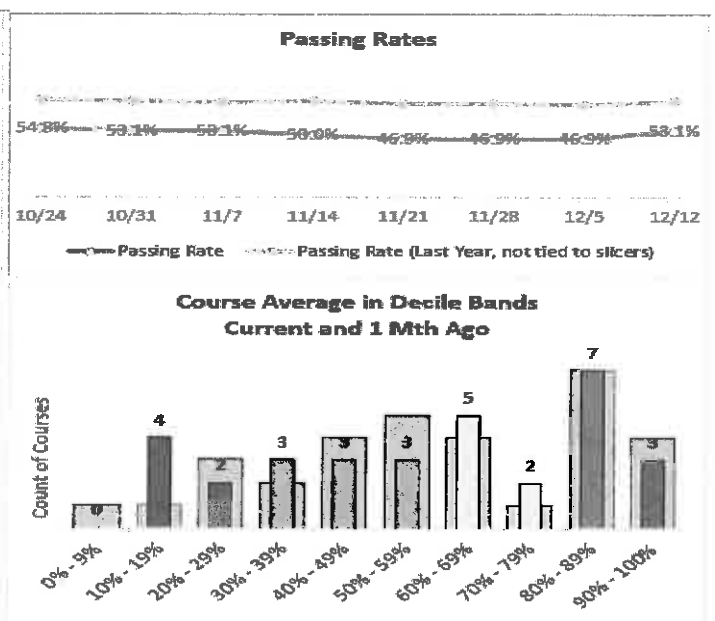
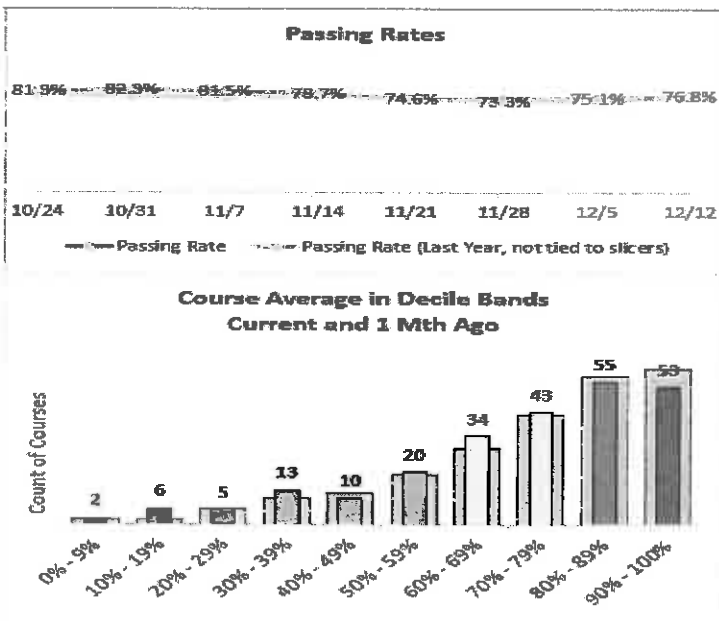
MATH ACTION STEP: Working to assign chronically failing Algebra I students to a Math Remediation class instead of reassignment to Algebra IA or assignment to Algebra IB when they were not successful in Algebra IA.

MATH ACTION STEP: Focusing on the math Power Standards (Check Plus and Check) with Algebra I students in advance of ISTEP 10.

TENTH GRADE ACTION STEP: Planning a peer tutoring program for underperforming 10th grade students starting second semester in advance of ISTEP 10.

GRADES 6-8 PASSING RATES

GRADES 6-8 SPECIAL ED. PASSING RATES



Grades 6-8 Hybrid Pass Rates and Action Steps

The 6-8 pass rates are consistent to last year's rates, but low math pass rates are keeping the overall rate from surpassing last year. Special education students have a passing rate that is 24% lower than their general education peers and 24% lower than last year.

SPECIAL EDUCATION ACTION STEP: Working to fill the special education position open since August.

MATH ACTION STEP: Focusing on the math Power Standards (Check Plus and Check) with math 6/8 students in advance of ISTEP.

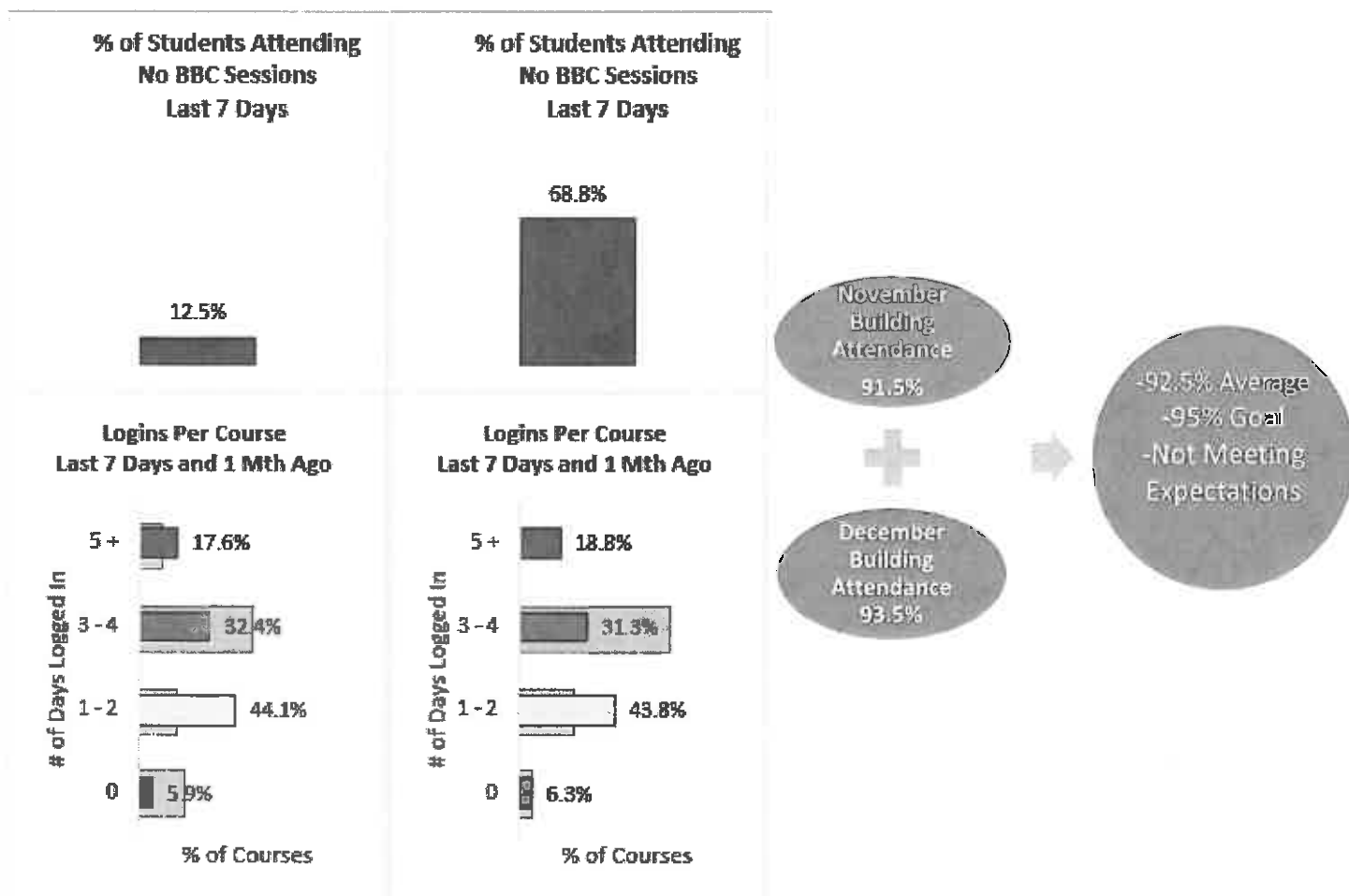
MATH ACTION STEP: Providing students with an additional class period dedicated to teaching the Academic Standards.

Hybrid 6-12 Virtual & Building Attendance

GRADES 6-8

GRADES 9-12

GRADES 7-12 BUILDING ATTENDANCE



Grades 6-12 Hybrid Virtual/Building Attendance and Action Steps

Grades 6-8 has enjoyed a dramatic drop in percentage of students attending no BBC session over a seven-day period, while grades 9-12 have experienced an increase of students not attending BBC sessions in the last seven days. Logins per course have increased in all grade levels in the 1-2 day range as compared to last month, while the 3-4 day login category has seen a decrease across the board. This decrease was partially offset by an increase in logins over a five-day period.

Building attendance increased by two percentage points, but the overall is still 2.5% below the attendance goal.

VIRTUAL ATTENDANCE ACTION STEP: To continue grades 6-8 successful communication efforts with students and learning coaches while ramping up communication efforts at the grades 9-12 level.

VIRTUAL ATTENDANCE ACTION STEP: To continue lowering the “red” students and increasing the “yellow” students to facilitate improvement in the percentage of “green” students logging in for 3-4 days.

BUILDING ATTENDANCE ACTION STEP: To continue moving students through the truancy process, transferring students to the virtual school no longer able to make it to the building, and ramping up communication to show improvement toward the 95% attendance goal level.

Hoosier Academies

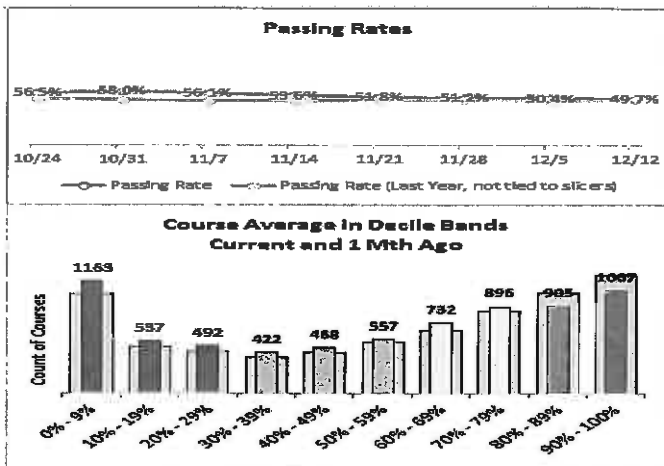
9-12 Virtual School Board Academic Report

December 13, 2016

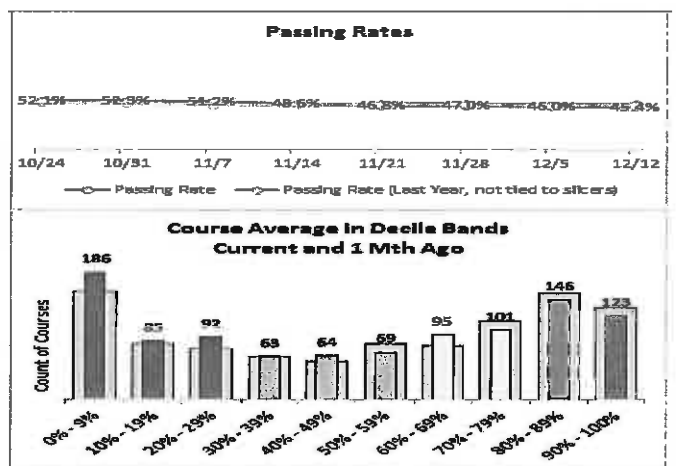
Virtual High School Pass Rates

The pass rates are consistent to last year's pass rates. Since November's meeting, there has been a decrease in the number of 0-9% by 247 courses due to withdrawals. Overall, Special Education students have a passing rate that is 4% lower than their general education peers.

All Students

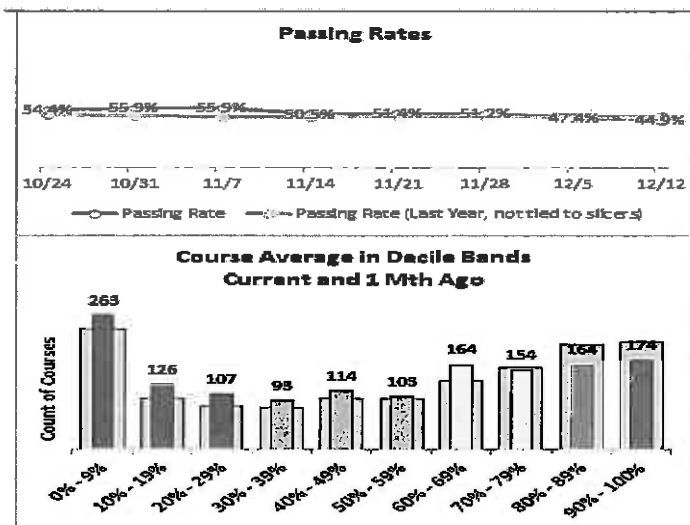


Special Education Students

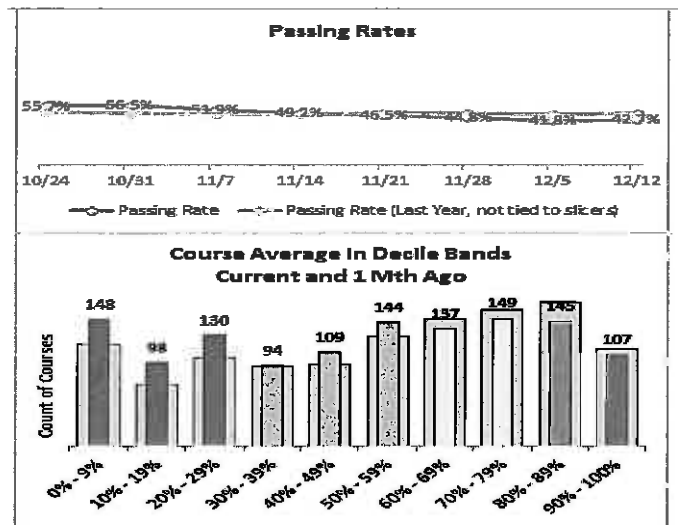


10th Grade Pass Rates- ELA and Math

ELA



MATH



Virtual High School Required Class Connect Attendance- 22.3%

Math		English		Science		Social Studies		Other	
Student Counts		Student Counts		Student Counts		Student Counts		Student Counts	
Total Inv:	4938	Total Inv:	5818	Total Inv:	3911	Total Inv:	3224	Total Inv:	2572
Total Att:	1209	Total Att:	1369	Total Att:	866	Total Att:	818	Total Att:	302
Avg Hrs Att:	0.74	Avg Hrs Att:	0.59	Avg Hrs Att:	0.47	Avg Hrs Att:	0.74	Avg Hrs Att:	0.13
Att. Rate:	◆ 24.5%	Att. Rate:	◆ 23.5%	Att. Rate:	◆ 22.1%	Att. Rate:	△ 25.4%	Att. Rate:	◆ 11.7%

ECA Update

End of Course Assessments for 11th and 12th grade students that have not passed ECA English or ECA Math was administered from December 7-16, 2016. We scheduled 455 students for Math and 398 students for English.

Action Steps

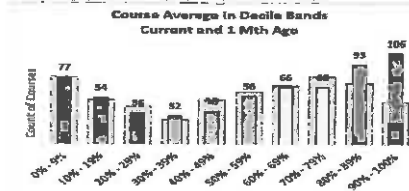
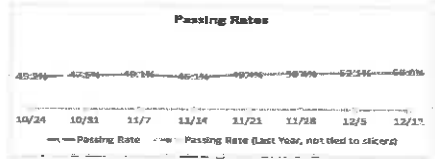
- We have changed the Small Group schedule to avoid conflicts among content areas. This will decrease the confusion for students and families regarding required Small Group sessions.
- In efforts to increase engagement and pass rates, teachers are using the additional time gained from the schedule change to make targeted phone calls. The goal is to have 5 meaningful phone conversations per day with targeted students.
- The Special Education teachers' class connect schedule has been changed to offer support focused on ELA and Math.

Hoosier Academies Insight School Board Academic Report

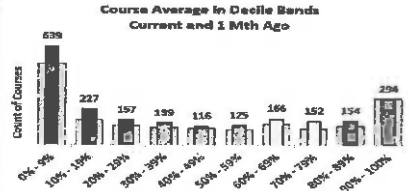
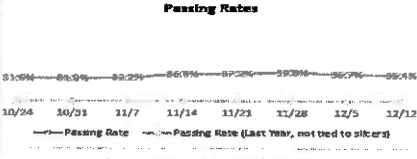
December 20, 2016

(Data from 12/12/16 data tracker)

7-8 Passing Rates (all courses)

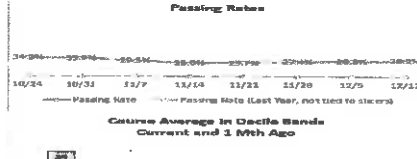


9-12 Passing Rates (all courses)

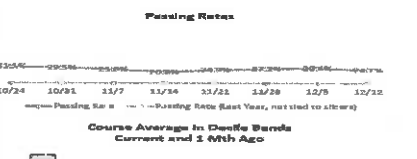


Insight Pass Rates: 7-8 pass rates continues to show a slight increase since 11/14 (46.1% to 53%). Course averages in the top 4 decile bands increased over past month – more students have a passing average. HS pass rates show slight increases in pass rates and increases in not passing rates (overall pass rate is down - 37.2% to 35.4%).

10th Grade ELA

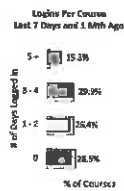
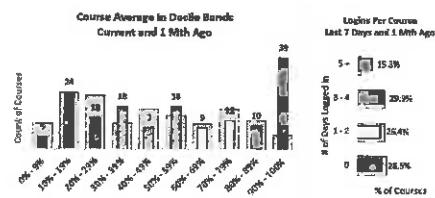


Math



Insight Grade 10: Grade 10 is showing an increase in ELA pass rate (25%-29.2%) over the past month and an increase in Math 20.8% to 24.7%.

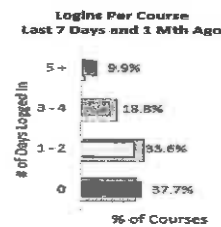
7-8 Grade Math



Grade 7-8 Math – this teacher began specifically targeting small group instruction to ISTEP test blueprints mid-October. This approach with weekly progress monitoring with exit tickets is making a positive change in pass rates.

IDENTIFIED NEED: INCREASE PASS RATES in ELA & MATH
ACTION: This approach is being implemented in ELA and Math in Insight small groups to increase student learning. ELA and Math Data meetings are focusing on review of this approach bi-monthly. Current Math pass rates 9-12 are at 21%.

Insight Class Connect



Logins per course do show an increase in 5+ logins, while all other categories show a decrease in logins.

IDENTIFIED NEED: INCREASE CLASS ATTENDANCE

ACTION: Review students with poor engagement with advisors, counselors, SPED teachers, and teachers – insure that FAST is involved and that there is a reach-out in some way (phone calls).

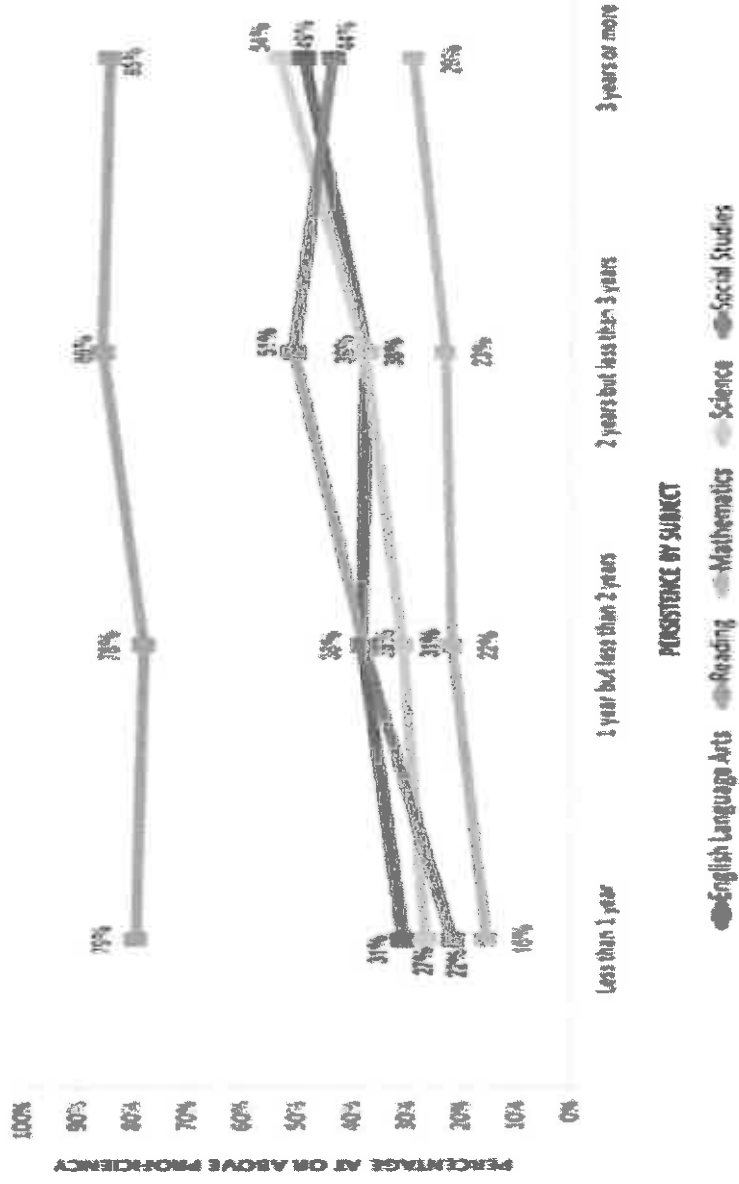
Teacher-to-student phone conversations are effective in building relationships and giving teachers much insight into meeting the student's needs and in getting them to attend. Teachers set goals in data meetings to phone students not attending.

Persistence Matters



Students enrolled three or more years have proficiency rates between 6 and 22 points higher than newly-enrolled students.

2015-2016



Subject	%AAP: Increase or Decrease in percentage points
English Language Arts	+18
Reading	+6
Mathematics	+13
Science	+22

FAST Board Summary Report

Hoosier Academy Indianapolis

Referrals

- FAST Action: 31
- FAST Waiting: 2
- Closed: 1

Login Information

- Student login greater than 1 week: 5
- Learning Coach login greater than 1 week: 10

Most Recent Pulse Check – 11/27/2016 – 35 Responses

How satisfied are you currently with your overall experience? Very Dissatisfied (1) through Very Satisfied (7)

1=0, 2=1, 3=0, 4=0, 5=11, 6=11, 7=13

How well are you and your student able to keep up with your daily schooling routine? The scale is Not Very Well at All (1) through Very Well (7)

1=1, 2=2, 3=0, 4=7, 5=4, 6=12, 7=9

Hoosier Academy Virtual

Referrals

- Closed: 27
- FAST Action: 249
- FAST Waiting: 63
- Withdrawn: 14

Login Information

- Student login greater than 1 week: 256
- Learning Coach login greater than 1 week: 479

Most Recent Pulse Check – 11/27/2016 – 484 Responses

How satisfied are you currently with your overall experience? The scale is Very Dissatisfied (1) through Very Satisfied (7)

1=10, 2=5, 3=9, 4=25, 5=88, 6=113, 7=234

How well are you and your student able to keep up with your daily schooling routine? The scale is Not Very Well at All (1) through Very Well (7)

1=14, 2=12, 3=19, 4=46, 5=71, 6=109, 7=213

Insight School of Indiana

Referrals

- Closed: 3
- FAST Action: 40

- FAST Waiting: 60
- Withdrawn: 4

Login Information

- Student login greater than 1 week: 108
- Learning Coach login greater than 1 week: 95

Most Recent Pulse Check – 11/27/2016 – 63 Responses

How satisfied are you currently with your overall experience? Very Dissatisfied (1) through Very Satisfied (7) – 93 Response on 10/20/2016

1=1, 2=5, 3=4, 4=8, 5=9, 6=9, 7=27

How well are you and your student able to keep up with your daily schooling routine? The scale is Not Very Well at All (1) through Very Well (7)

1=2, 2=3, 3=9, 4=9, 5=19, 6=8, 7=13



On-Site Monitoring Report

Basic Information				
Date:	November 29, 2016			
Monitoring Visit:	Focus	Priority 1 st	Priority 2 nd	Priority Other
District:	K12 Concepts School			
School:	Hoosier Academy Virtual School			
IDOE Outreach Coordinator:	Andrea Robinson			

The Visit

- Classroom observations of 6-7 teachers
- Teacher interview
- Administrator interview
- Review of evidence submitted for the 8 Turnaround Principles
- Debrief with Administrators

Powerful Practices

- Hoosier Virtual Academy has many systems and structures in place in order to be successful. They have several committees/programs in place for teachers and students to participate in or benefit from. They also include teacher representatives in the various committees/programs for input and buy-in.
- Data Meetings play a vital role in the tiered instruction that takes place. Grade levels/content areas for the HS, meet bi-weekly to analyze recent data and make purposeful decisions with data.
- Teachers receive professional feedback from instructional coaches, administrators, and peers.
- The SWAG program allows for students to receive additional tutoring in a face to face setting.
- Families are offered numerous opportunities to network and engage with one another at community engagement events.

Opportunities for Improvement

- Possibly having students track their own data using a digital data tracker portfolio in order for students to take ownership of their learning and accountability for their improvements.
- Conduct student data meetings using the data trackers for student accountability.
- Have students share their data trackers with their learning coaches quarterly and get signature (Student-Led Conferences with Learning Coaches)
- Find opportunities and strategies that will increase student participation and attendance in lessons.
- Use multiple forms of data to identify those high level students with low growth percentiles in order to maximize targeted instruction (ISTEP, NWEA, Interim Assessments...).
- Align a common grading system and develop a common grading practice across all grade levels.

Recommended Action Steps/ Commitments

1. Implementing peer observations vertically and horizontally in order to match teachers and conduct peer observations that are aligned to differentiated PD/ best practices. (Beginning in January)
2. Find opportunities and strategies that will increase student participation and attendance in lessons. (Turn the camera on in CC sessions)
3. Use multiple forms of data to identify those high level students with low growth rates in order to maximize targeted instruction (ISTEP, NWEA, Interim Assessments...). (In the process of identifying students)
4. Curriculum mapping of new courses and the critical content standards. (Scheduled for January 4th -5th)

2017-2018 Hybrid Track Learning Center Days: Mon/Tues: 7th-12th Thurs/Fri: K-6th Hoosier Academies Network of School | 2017-2018 CALENDAR

JULY 2017						
S	M	T	W	Th	F	S
						1
2	3	4	5	6	7	8
9	10	11	12	13	14	15
16	17	18	19	20	21	22
23	24	25	26	27	28	29
30	31					

Students Only
Staff and Students

JANUARY 2018						
S	M	T	W	Th	F	S
						6
7	8	9	10	11	12	13
14	15	16	17	18	19	20
21	22	23	24	25	26	27
28	29	30	31			

1/1/18 – 1/5/18 -Winter Break
1/8/18- School Resumes

1/15/18 – MLK Day – No School
1/24/18- End of 2nd 9 Weeks
(End of 1st Semester)

1/25/18 -1/26/18 Staff PD
1/25/18-1/26/18- No School for Students

AUGUST 2017						
S	M	T	W	Th	F	S
		1	2	3	4	5
6	7	8	9	10	11	12
13	14	15	16	17	18	19
20	21	22	23	24	25	26
27	28	29	30	31		

8/1/17 -Staff Returns

8/1/17 -8/18/17- Dedicated Staff Work
and Professional Development Days

8/21/17 -First Day of School

FEBRUARY 2018						
S	M	T	W	Th	F	S
				1	2	3
4	5	6	7	8	9	10
11	12	13	14	15	16	17
18	19	20	21	22	23	24
25	26	27	28			

2/19/18- Presidents Day - No School

SEPTEMBER 2017						
S	M	T	W	Th	F	S
					1	2
3	4	5	6	7	8	9
10	11	12	13	14	15	16
17	18	19	20	21	22	23
24	25	26	27	28	29	30

9/4/17-Labor Day – No School

MARCH 2018						
S	M	T	W	Th	F	S
				1	2	3
4	5	6	7	8	9	10
11	12	13	14	15	16	17
18	19	20	21	22	23	24
25	26	27	28	29	30	31

3/26/18 – 3/30/18 -Spring Break

OCTOBER 2017						
S	M	T	W	Th	F	S
1	2	3	4	5	6	7
8	9	10	11	12	13	14
15	16	17	18	19	20	21
22	23	24	25	26	27	28
29	30	31				

10/16/17 – 10/20/17-Fall Break
10/31/17- End of 1st 9 Weeks

APRIL 2018						
S	M	T	W	Th	F	S
1	2	3	4	5	6	7
8	9	10	11	12	13	14
15	16	17	18	19	20	21
22	23	24	25	26	27	28
29	30					

4/6/18- End of 3rd 9 Weeks

NOVEMBER 2017						
S	M	T	W	Th	F	S
			1	2	3	4
5	6	7	8	9	10	11
12	13	14	15	16	17	18
19	20	21	22	23	24	25
26	27	28	29	30		

11/1/17 – No School for Students
11/1/17- Staff PD

11/22/17 - 11/24/17 Thanksgiving
Break

MAY 2018						
S	M	T	W	Th	F	S
		1	2	3	4	5
6	7	8	9	10	11	12
13	14	15	16	17	18	19
20	21	22	23	24	25	26
27	28	29	30	31		

5/28/18 -Memorial Day – No School

DECEMBER 2017						
S	M	T	W	Th	F	S
					1	2
3	4	5	6	7	8	9
10	11	12	13	14	15	16
17	18	19	20	21	22	23
24	25	26	27	28	29	30
31						

12/25/17 – 12/29/17 Winter Break

JUNE 2018						
S	M	T	W	Th	F	S
					1	2
3	4	5	6	7	8	9
10	11	12	13	14	15	16
17	18	19	20	21	22	23
24	25	26	27	28	29	30

6/8/18- Last Day of School for
Students and Teachers

6/8/18- End of 4th 9 Weeks
(End of 2nd Semester)

6/16/18-Graduation

6/11/18 – 7/6/18 -Summer School